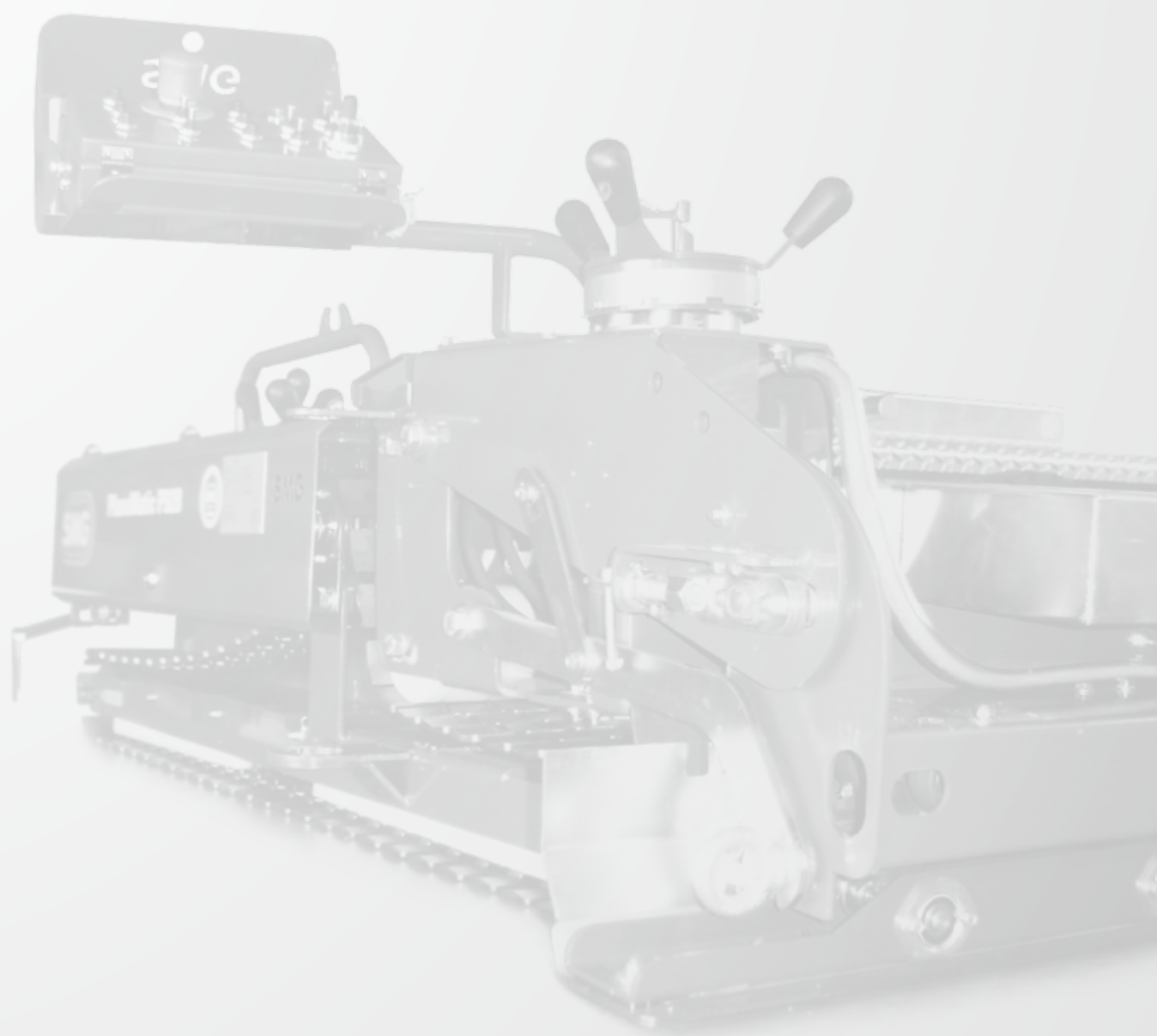


2010
2011



passion for sports grounds

Product Catalogue **2010/2011**

Contents

History	4
Track	8
MixMatic M6008	10
MixMatic M6004	14
MixMatic M1202/M2402	18
MixMatic M250	24
PlanoMatic P928/P936	28
PlanoMatic P220/P228	32
PlanoMatic P703	34
PlanoMatic P207	38
StrukturMatic S122	42
StrukturMatic S80	46
MixMatic M930	50
MixMatic M5300	54
GranuMatic G402	58
LineStar LS15	62
RauMatic R251	66
RotoMatic R80	70
RotoMatic R58	74
TrackCutter TC400	78
Accessories	82

Field	90
TurfRoller TR5000	92
TurfSet	96
SandMatic B1005	100
SandMatic B1505RC	104
SportChamp SC2	108
CareMax CM2	114
TurfBoy TB2	118
TurfKing TK1100/TK1500/TK1502	120
TurfCare TCA1400	122
TurfSoft TS2/TS3	124
Decompaction brush DC1600	128
Drag-brush SB1	129
CarpetWonder CW95	130
RenoMatic RM1400	134
TurfPickup TP600	138
Tools	142
Industry	
PlanoMatic P435	144
PlanoMatic P102	148
Company	152

History



1975

Since 1975 SMG has been dealing with the development of modern machinery for the installation of synthetic surfaces in the sports industry. Also for the maintenance of artificial turf or carpets with granule infilling SMG has already presented the world's first innovations since the 80s. For about 35 years SMG has been offering a unique range of machinery. As a pioneer in the special sector „synthetic sports surfaces and artificial turf“ SMG disposes of recognized competence and experience since decades. Ask us - we know what is possible.



1989



1987



1978



1988



1985



1990



1988



1992



1985

Today



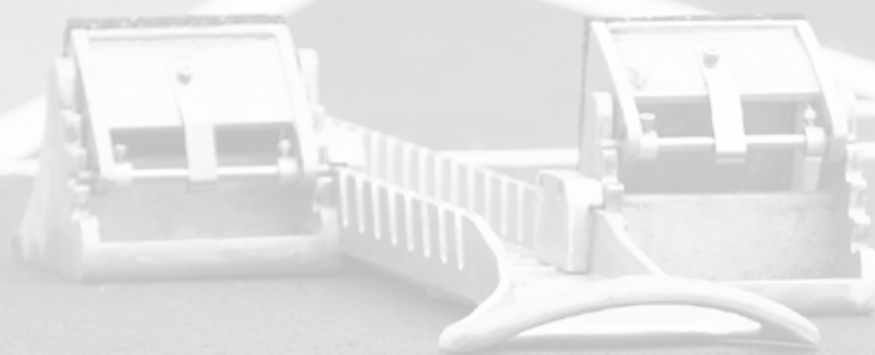


Show Room



SMG develops and manufactures machines for the installation and maintenance of synthetic sports surfaces and artificial turf pitches. On a total area of 6.000 square meters our company produces solutions which are based on the market needs and easy to operate, powerful and approved since more than 35 years all over the world.

From the beginnings till today our quality assurance ends in „Made in Germany“.



SMG manufactures customized construction machines for the professional installation of joint less, permanent elastic sports surfaces. Our mixing, paving as well as structural spraying machines are especially designed for the implementation of Insitu applications in indoor and outdoor areas. Projects ranging from standardised children's playgrounds up to an IAAF-certified athletic stadium are possible. All conventional granulates, liquid components and binders used in the installation of synthetic sports surfaces can be processed by SMG machines.

Track

They install elastic layers made from rubber granulate and stones as well as basic surface material made of rubber or EPDM granulates, mixed with PU binder. EPDM granulates are processed to single-layer or multi-layer, flat or structured synthetic sports surfaces. Structural spray coatings or so-called sandwich systems can be realized.

The paving machines are manufactured with a standard working width from 1.2 up to 3.6 meters. SMG mixers being adjusted to the pavers are available with a mixing performance from 50 kg up to nearly 400 kg per minute. Thus, this professional mixing equipment is suitable for the precise mixing of multi-component liquid systems. SMG offers spraying machines and granulate blowers for structured surfaces as well as machines for grinding and milling of worn out surfaces for renovation purposes. For the renovation machines for grinding and milling of worn out surfaces are available.

MixMatic M6008

Fully automatic continuous mixer for the mixing of materials used for synthetic sports surfaces

The increasing productivity due to faster and wider paving machines as well as the higher material requisition for the installation of elastic layers and elastic base layers require mixing machines with an extreme output. The MixMatic M6008 is capable to mix rubber granulate with binder. By using an optional material container gravel can be added to the mixture, thus an output of up to 400 kg/min is achieved. The material container for rubber granulate comprises 2.5 cubic meter, for gravel 1.6 cubic meter and can be loaded either with a BigBag or a shovel loader. The auger forwards the rubber granulate or the gravel to the mixing pipe where it will be homogeneously mixed with the binder.

The level of the single components will be controlled by sensors. Thus the technique of the M6008 even covers the increased material requisition in the construction of sports surfaces. In order to ensure a smooth material flow between M6008 and the paving machine the transport logistics though has to be adjusted to the increased material output. The M6008 is equipped with integrated truck-fork slots for safe transport.

The suction pump as well as the dosage pump for the binder are driven by electric motors in the same way as the augers and the mixer. The use of frequency convertors for every single electric motor enables a precise dosage. On the basis of the specified mixing ratios and the desired output/minute, the 7.5"-STN-touch-operation terminal calculates the nominal values of the dosage pumps and augers. After manual confirmation of the values and the following control calibration the M6008 is operated via the manual control (optional remote control). Output quantity and output time can be adjusted to the size of the different transport vehicles. Preferably the mixing material will be continuously forwarded to a special material hopper where it can be removed by a shovel loader or forklift.



MixMatic M6008



MixMatic M6008 without gravel unit



Junction for gravel unit



Suction pump and by-pass hose

Recommended accessories for MixMatic M6008



Generator E550

Page 86



Drum wheelbarrow

Page 87



Drum support

Page 86



Drum cock

Page 86



Drum wrench

Page 87



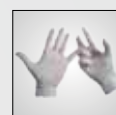
Scale

Page 88



Gloves

Page 89



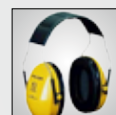
Disposable gloves

Page 89



Cotton gloves

Page 89



Hearing protector

Page 89



Safety glasses

Page 89

Chassis	Laser-cut steel frame construction, plastic-coated
Mixer pipe	Galvanized, can be swivelled up and down hydraulically, binder connection sideways
Drive augers / Pumps / Mixer	Electric motors are infinitely adjustable by frequency convertors
Power	23.8 kW (32 HP) / 400 V / 50 - 60 Hz
Max. performance	400 kg/min
Weight	Basic mixer: 1.600 kg Gravel unit: 600 kg
Dimensions	Basic mixer: L 2.350 x W 1.360 x H 1.890 mm Gravel unit: L 2.350 x W 900 x H 1.890 mm

Subject to technical alterations

MixMatic M6004

Automatic continuous mixer for mixing materials used for synthetic sports surfaces

The powerful and compact M6004 is a highly effective and clean solution for the homogeneous mixing of rubber granulate, with single-component binder (polyurethane). A gravel unit or a second PU pump can be optionally coupled to the basic machine. In conjunction with a modular construction system of various screw feeders, pipes and feeding adapters it is possible to get a wide variety of individual mixtures with precisely measured ratios for many different kinds of surfaces, e.g. recycled granulate base mats, EPDM granulate surfaces, sandwich-systems, PUR-coatings, structural spraying coatings, elastic subbases and others. Switch and control elements for the mixer and the auxiliary appliances are on one common control panel.





Option 1

Gravel container with 1.000 liter capacity, with sensor control of the fill level and a vibrator driven by an electric motor for a continuous material flow.

Option 2

An electrical steered dosage pump for mixing of polyurethane coatings. Hose connections for adding the B component as well as the special mixing tube and tools are included in the delivery of the dosage pump.

The steering track-rod makes the handling of the MixMatic M6004 easy manoeuvrable on site. The chassis handbrake and the supports, which can be pulled out, hold the machine firmly in place when parked; all-round truck-fork slots enable a safe loading on a fork-lift truck.

The central electrical control for the mixer has interfaces for the connection of the auxiliary appliances. The PU, granulate and gravel outputs are infinitely adjustable. The output quantity of the individual component is relying on the rpm and digitally displayed.

The mixing unit, consisting of pipe, feed screw and motor works at a constant rpm. Metering and mixing times are controlled by a timer.

MixMatic M6004



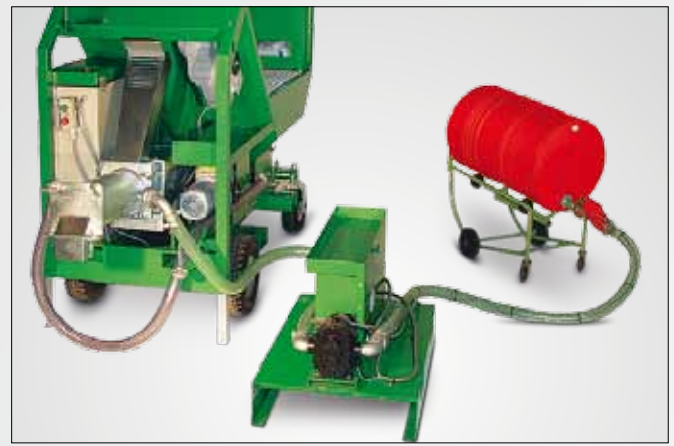
Suction and dosage pump



Example of a combination of basic mixer and gravel unit (Option 1)



Switch cabinet with central electrical control



Transportable dosage pump unit for the mixing of 2-component PU-coatings (Option 2)

Recommended accessories for MixMatic M6004



Generator E285

Page 86



Extension cord

Page 87



Drum wheelbarrow

Page 87



Drum support

Page 86



Drum cock

Page 86



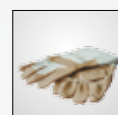
Drum wrench

Page 87



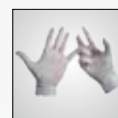
Scale

Page 88



Gloves

Page 89



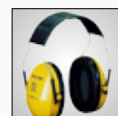
Disposable gloves

Page 89



Cotton gloves

Page 89



Hearing protector

Page 89



Safety glasses

Page 89

Chassis + mixing container	Laser-cut steel frame construction, plastic-coated;	
Tires	Rigid axle: air-filled tires, manual parking brake; Steering axle: air-filled tires, pull-out supporting legs Air-filled tires ø 400 mm Solid rubber tires ø 350 mm	
Mixer pipe	Galvanized, can be swivelled up and down hydraulically, binding agent connection on the side	
Drive pump and gear	3-phase current for granulate and grit drives; A.C. geared motor infinitely regulatable, electron. rpm indicator.	
Mixer drive	A.C. geared motor, constant rpm.	
Performance	Rubber/Binder	max. 150 kg/min
	Rubber/Gravel/Binder	max. 160 kg/min
	Binder/Polyol	max. 35 kg/min
	Binder/Polyol/Rubber	max. 35 kg/min
Power	Basic mixer:	12 kW / 400 V / 50 - 60 Hz / 26 A
	Grit unit:	1.85 kW / 400 V / 50 - 60 Hz / 4.25 A
	2nd dosing pump:	1.85 kW / 400 V / 50 - 60 Hz / 4.25 A
Weight	Basic mixer:	1.100 kg
	Gravel unit:	900 kg
	2nd dosing pump:	350 kg
Dimensions	Basic mixer:	L 2.250 x W 1.000 x H 1.800 mm
	Gravel unit:	L 2.250 x W 1.000 x H 1.800 mm
	2nd dosing pump:	L 1.100 x W 710 x H 700 mm
Subject to technical alterations		

MixMatic M1202/M2402

Discontinuous mixer for materials used for synthetic sports surfaces and industrial floors

Materials for sports surfaces, such as granulate, gravel, cork and PU-coating are homogeneously mixed by the MixMatic M1202 and M2402. The M1202 is also ideal for industrial floors, e.g. for cement-bound floor screeds or epoxy resin floor coverings.

The robust construction of the machines is designed to withstand the extremely tough conditions of non-stop work on job sites. Thus the low filling lever for loading and the strong lifting hydraulics for the speedy discharging of the mixed material turn out to be key benefits.

The mixer works on the same basis than a tumbler mixer. The material is mixed extremely intensive due to the compulsory mixer and the mixing cycles are correspondingly shortened. Homogenous mixtures are the result of short mixing times. By using the extra tray (option) the mixing process can be expedited and its lifting hydraulics, which is connected to the basic mixer M1202, facilitates the loading. Outriggers guarantee a safe position on uneven surfaces.

If the quantity of mixed material needs to be increased - e.g. for thicker coverings or over large areas - the large mixer M2402 is exactly the right solution. With the double mixing capacity, which is enabled by the twin mixing containers, the machine has all the positive characteristics found with the M1202 model: robust technique, low filling level, highest mixing intensity and short mixing cycles.

For this reason the MixMatic M2402 is a supplement to the M1202 type and the larger machines MixMatic M6004 and MixMatic M6008. They offer an alternative to the user for the efficient installation of middle and larger sport and industrial surfaces.

While charging and emptying is going on, the mixing tool remains in the container and continues to scrape the interior surface of the container so that no material can build up and the wall remains clean. The position of the bow segment can be changed in order to vary the distance between the mixing tool and the container wall. Thus the intensity of mixing of fine or coarse material will be increased or reduced resulting in a constant mixing quality.





Charging vat: for simple, rational charging of the materials container

The special lifting hydraulic enables the mixing container to be raised to any desired height up to 1.500 mm for emptying into any of the dumpers commonly used in the market.

Ergonomically and clearly positioned, the operating elements facilitate a danger-free work with the machine. All important operating elements are protectively covered. For cleaning of the mixing tool it can be easily removed with a few grips.

Charging vat

During mixing the next charge of granulate can already be prepared in the extra tray. This will be hydraulically tipped into the mixing container, so that the whole procedure continues almost without any interruption. In contrast to conventional charging of the mixer with separate sacks, the use of the optional charging tray expedites the mixing process and increases the quantity of available mixed material.

MixMatic M1202



The mixing container can be emptied or cleaned at any desired height



Integrated and protected control unit



Container emptying in all standard dumpers



Control valve, pressure control and pressure valve are ergonomically arranged and securely integrated in the chassis

MixMatic M2402



While charging and emptying is going on the mixing tool remains in the container and continues to scrape the whole of the interior surface so that material cannot build up and the wall remains clean. The position of the bow segment can be changed in order to vary the distance between the mixing tool and the container wall. The hydraulic lifting device enables the mixing container to be raised to any desired height up to 1.500 mm for emptying into any of the dumpers commonly used in the market. Ergonomically positioned, the operating elements simplify a danger-free work with the machine. All important operating elements are protectively covered.

The MixMatic M2402 model has the same advantages as the ones of the M1202 series, such as the low filling point height of 1.000 mm. An additional, impressive feature of this machine is the duplication of the output without an increase of the actual mixing time. Thus, the MixMatic M2402 is the connector between the machines of the M1202 series and the large plants of the MixMatic M6004 series. It offers an alternative for the rational installation of bigger areas to the users.

MixMatic M2402



Container emptying in all standard Dumpers



The mixing container can be emptied or cleaned at any desired height up to 1.500 mm



Hydraulic supports for a safe position



Large-capacity mixer vat with hydraulic twin drive for the mixing tools

MixMatic M1202/M2402

Chassis	Laser-cut steel frame construction, plastic-coated	
Tires	M1202: 4 air filled tires ø 400 mm M2402: 2 air-filled tires ø 400 mm 2 solid rubber tires ø 315 mm	
Gearing	M1202 D diesel engine	12 kW (16 HP)
	M1202 E electric motor	7.5 kW (10 HP)
	M2402 D diesel engine	14.9 kW (20.3 HP)
	M2402 E electric motor	15 kW (20.4 HP)
Electrical equipment	Compact control in a housing protected against spraying water; with switch for changing the direction of turn	
Mixing container	Steel frame construction; swivelling protective cover, galvanized; M1202: capacity 200 liters M2402: capacity 400 liters	
Mixing tool	Galvanized; interchangeable bow segment; M1202: performance 180 kg, mixing cycle c. 2 min M2402: performance 400 kg, mixing cycle c. 2 min	
Mixer drive	Hydraulic aggregate with tank, pump, oil cooler, control valve, main control block, level indicator with thermometer. Pump and oil cooler driven by the motor via twin V-belts, tank capacity 45 liters	
Lifting drive of vat	Double-working pair of hydraulic cylinders	
Tilting drive of vat	Double-working pair of hydraulic cylinders	
Tool drive	Hydraulic motor with reduction gearing	
Filling height	M1202: 900 mm	M2402: 1.000 mm
Weight	M1202: 650 kg	M2402: 900 kg
Dimensions	M1202: L 2.300 x W 1.000 x H 1.100 mm M2402: L 2.300 x W 1.600 x H 1.200 mm	

Recommended accessories for MixMatic M1202/M2402



Wheelbarrow

Page 87



Drum wheelbarrow

Page 87



Drum support

Page 86



Drum wrench

Page 87



Drum cock

Page 86



Bucket 10 liters

Page 88



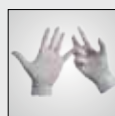
Gloves

Page 89



Aluminium shovel

Page 87



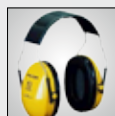
Disposable gloves

Page 89



Cotton gloves

Page 89



Hearing protector

Page 89



Safety glasses

Page 89


Subject to technical alterations

MixMatic M250

Compact compulsory mixer for materials used for synthetic sports surfaces and industrial floors as well as protective shock pad covering

A wide variety of materials in small quantities can be homogeneously mixed by the MixMatic M250. The compact mixing unit is driven by a petrol engine.

Due to its construction the M250 can be stored space-saving and the powder-coated heavy-duty wheelbarrows used as mixing and transport container ensure a continuous and flexible flow of material.



A hydraulic lifter swings the mixing head upwards. Then the heavy-duty wheelbarrow is placed underneath the mixing unit. Afterwards the mixing unit needs to be lowered and thus the container is fixed in position. The mixing cycle starts and continues until it is switched off by hand. During the mixing time of approx. 2 minutes the next mixture can be prepared in another wheelbarrow. Additional material can be safely added at any time through the filling lattice. Thus a homogeneous mixture of all components is achieved in the shortest possible time.

Two heavy-duty wheelbarrows, which serve as transport and mixing containers, are included in the delivery.



MixMatic M250



The mixing tool integrated in the mixing head, hydraulically liftable



Heavy-duty wheelbarrow easy to connect as a mixing container



Mixing in the heavy-duty wheelbarrow, tightly closed and compact



Petrol engine and steering elements are protected and clearly positioned

Recommended accessories for MixMatic M250



Heavy-duty wheelbarrow as mixing and transport container

Chassis	Laser-cut steel frame construction, plastic-coated
Drive	M250 B: petrol engine / 1 cylinder / 9.6 kW (13 HP)
Mixing container	Heavy-duty wheelbarrow, capacity c. 100 liters
Mixing tool	Galvanized; interchangeable; mixing performance 100 liters, mixing cycle c. 2 min
Mixer drive	Hydraulic aggregate with tank, pump, manual control valve, main control block, contents level display
Filling height	1.200 mm
Weight	Mixer 300 kg, wheelbarrow 45 kg
Dimensions	L 1.400 x W 900 x H 1.200 mm

Subject to technical alteration



Wheelbarrow
Page 87



Drum wheelbarrow
Page 87



Drum support
Page 86



Drum wrench
Page 87



Drum cock
Page 86



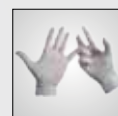
Bucket 10 liters
Page 88



Gloves
Page 89



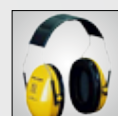
Aluminium shovel
Page 87



Disposable gloves
Page 89



Cotton gloves
Page 89



Hearing protector
Page 89



Safety glasses
Page 89

PlanoMatic P220/P228/P928/P936

Semi automatic and fully automatic paving machines for the installation of synthetic sports surfaces and elastic subbases

The largest fully automatic SMG paver for synthetic sports surfaces and elastic layers is the PlanoMatic P936. With an installation width of 3.500 mm the P936 achieves a theoretical performance of up to 950 m²/h with a working speed of c. 4.5 m/min.

The modular concept with proven components and a carefully thought-out and robust design are a guaranty of lasting functional use. The PlanoMatic P928, also a fully automatic paver, achieves a performance of up to 750 m²/h. Its installation width is 2.700 mm and it is ideal for athletic running tracks and school sports facilities.

The semi automatic version PlanoMatic P228 has the same installation width. This paver is a reasonable alternative with only less electric and hydraulic components. For smaller areas the semi automatic paver PlanoMatic P220 can be used with an installation width of 1.800 mm.

In contrast to the semi automatic versions P228 and P220, the fully automatic versions P936 and P928 are equipped with an automatic curve control for running tracks and a hydraulic controlled undercarriage. Additionally the fully automatic versions can optionally support the planar paving, especially on unbounded subbases, by means of an automatic levelling device (sensor/tactile unit). On the fully automatic machines the thickness can be conveniently changed by pushing a button on the control panel - on the semi automatic machines it can be changed by manual turning of the hand wheels on the screed.



Semi automatic as well as fully automatic SMG pavers are provided with control panels on both sides and are able to operate all functions easily and clearly. Supplementary the driving direction of the machine can be steered by integrated key switches on the front of the undercarriages.

P220



P928 with comfort seat, automatic levelling device and Hot Trowel

The operator seat can be fixed on the left or right, as required, and is adjustable to provide the most ergonomic position for the operator. A separate seat support can be attached for paving along fences or barriers. In order to clean and maintain, the screed can be simply swung upwards. Only a few manual grips are required to remove the driving chains.

In order to ensure a homogeneous surface, the screed is quickly brought up to temperature with proven electrical heating bars. A control thermostat keeps the operating temperature of the screed constant during paving.

The installation width can be individually selected via limiter plates; thicknesses are adjustable from 6 to 50 mm using hydraulic control.

For an optimal surface quality the compaction can be adapted accordingly by adjusting the inclination angle of the screed. Material limiters installed on the side of the screed assure exact paving edgings for surfaces without joints. If the sensor unit (P928/P936) is used as well, the manual smoothing of the joints can be almost passed. The running speed is infinitely variable between 0.8 - 4.5 m/min.

The chain drive unit of the latest generation is generally 140 mm wide and can be quipped with two different driving chain versions, depending on the type of subbase. This means that the PlanoMatic can safely drive on bounded as well as unbounded subbase constructions. The transport undercarriage of the P928 and P936 will be hydraulically lifted but can also be lifted manually via hand pump. The P228 and P220 can only be lifted by using the hand pump. As an additional option the paver can be featured with a suitable generator. The generator mounted on a swivelling console is safely protected and securely fixed to the PlanoMatic. An external power supply is therefore not required. The generator is protected by its own chassis structure.

PlanoMatic P220/P228/P928/P936



Electrical heated screed, adjusting spindle for the grade setting, material limiter



Control panel, installed on both sides, all operating functions including curve control integrated (P928/P936)



Screed heating with thermostat and additional 220 V power supply, e.g. for HotTrowel



Additional hand pump for the manual up/down lifting of the machine



Wide chain drive unit (140 mm) for safe traction, on all kinds of subbase constructions

PlanoMatic P220/P228/P928/P936



Seat support with comfort seat



Additional buttons to guide the machine from both sides of the front

Recommended accessories for P220/P228/P928/P936



Aluminium shovel
Page 87



Solid string
Page 89



Generator E110
Page 86



Measuring tape
Page 88



Hearing protector
Page 89



Extension cord
Page 87



Adapter cord
Page 87



CEE Plug + Coupling 16 A
Page 86



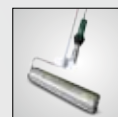
Smoothing trowel
Page 89



Hot trowel
Page 88



W10 / W20
Page 88



HR50 / HR70
Page 89



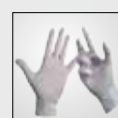
TestSet
Page 87



FloorTest FT50
Page 87



Gloves
Page 89



Disposable gloves
Page 89



Cotton gloves
Page 89

Chassis	Laser-cut steel frame construction, plastic-coated, most mounted parts galvanized
Drive	2 infinitely variable A.C. gear motors / speed of forward movement c. 0.8 m/min to 6 m/min
Chain drive	with standard chains 140 x 15 mm with special chains 153 x 50 mm (optional)
Smoothing board drive	A.C. gear motor
Power	6 kW (8 HP) / 3 ph. / 400 V / 50 - 60 Hz / 16 A
Screed bar	Special profile with overflow edge for thicknesses from 6 - 50 mm, grade setting 10°; electrically-heated screed; thermostat regulated screed temperature.
Installation width	P220: up to 1.800 mm, P228: up to 2.700 mm P928: up to 2.700 mm, P936: up to 3.500 mm
Installation thickness	P220/P228: 6 - 50 mm, manually adjusted and controlled by handwheel P928/P936: 6 - 50 mm, electrohydraulic operated, optional controlled via automatic levelling device
Lifting the driving gear	P928: to 2.700 mm, P936: to 3.500 mm electrohydraulic, additional manually-operated hydraulic pump
Area performance	P220: to 450 m ² /h P228/P928: to 750 m ² /h P936: to 950 m ² /h
Weight	P220: 650 kg, P228: 900 kg (without optional accessories) P928: 950 kg, P936: 1.100 kg (without optional accessories)
Dimensions	P220: L 1.650 x W 2.000 x H 700 mm P228: L 1.700 x W 2.800 x H 700 mm P928: L 1.700 x W 2.800 x H 700 mm P936: L 1.950 x W 3.600 x H 700 mm

Subject to technical alterations

PlanoMatic P703

Fully automatic paving machine for the installation of synthetic sports surfaces, specially athletic tracks

The PlanoMatic P703 - being the new edition of the market leading range PlanoMatic P700/P702 - is a fully automatic paver with a screed width of 2.800 mm enabling installation widths of maximum 2.700 mm. The highest installation speed is 5.0 meters per minute, thus providing a theoretical performance of approx. 850 m²/h. The P703 is designed especially for the professional installation of athletic running tracks. With a weight of 850 kg and a narrow chain drive unit of 50 mm, the machine is easy to maneuver.

In order to ensure a homogenous surface the screed is quickly tempered by means of proven electrical heating elements. A control thermostat keeps the operating temperature of the screed constant during paving. The installation width can be individually selected via limiter plates; thicknesses are adjustable from 6 to 50 mm using electro-hydraulic control. An integrated automatic levelling device supports the even installation. For an optimal surface quality the compaction can be adapted accordingly by adjusting the inclination angle of the screed. The oscillating speed of the screed is adjustable and thus providing an optimum surface quality. Material limiters installed on the side of the screed assure exact paving edgings for surfaces without joints. The transport chassis of the P703 is operated electro-hydraulically. An additional hand pump enables a lifting of the machine without external power supply.

Equipped with control panels on both sides, all functions of the P703 can be operated easily and clearly. Supplementary the driving direction of the machine can be steered by integrated key switches on the front of the undercarriages. The operator seat can be fixed on the left or right, as required, and is adjustable to provide the most ergonomic position for the operator. A separate seat support can be attached for paving along fences or barriers. Only a few manual grips are required to remove the driving chains. Integrated special fork-lift pockets make it easy and safe to transport the machine on site.





PlanoMatic P703



Repulse wheel for the installation alongside border stones



Integrated height leveling for evenly flat installation



Ergonomic control panel, installed on both sides



New seat plate, installable on both sides, with stable adjustable seat

Recommended accessories for PlanoMatic P703



Aluminium shovel
Page 87



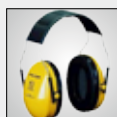
Solid string
Page 89



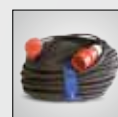
Generator E110
Page 86



Measuring tape
Page 88



Hearing protector
Page 89



Extension cord
Page 87



Adapter cord
Page 87



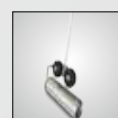
CEE Plug + Coupling 16 A
Page 86



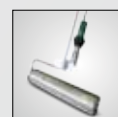
Smoothing trowel
Page 89



Hot trowel
Page 88



W10 / W20
Page 88



HR50 / HR70
Page 89



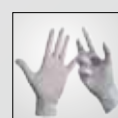
TestSet
Page 87



FloorTest FT50
Page 87



Gloves
Page 89



Disposable gloves
Page 89



Cotton gloves
Page 89

Chassis	Laser-cut steel frame construction, plastic-coated, most mounted-parts galvanized
Drive	2 A.C. gear motors (steered by frequency converter) / max. 5 m/min
Chain drive	with standard chains 50 x 15 mm, with special chains 80 x 40 mm (optional)
Smoothing board drive	A.C. gear motor
Power	6 kW (8 HP) / 3 ph. / 400 V / 50 - 60 Hz / 16 A
Screed bar	Special profile with overflow edge for thicknesses from c. 0 - 50 mm, grade setting c. 10°; electrically-heated screed, thermostat regul. of screed temperature, adjustable oscillating speed
Installation width	c. 2.700 mm (variable)
Installation thickness	0 - 50 mm
Lifting of the driving gear	electrohydraulic
Area performance	up to 850 m ² /h
Weight	c. 850 kg
Dimensions	L 1.950 x W 2.800 x H 700 mm

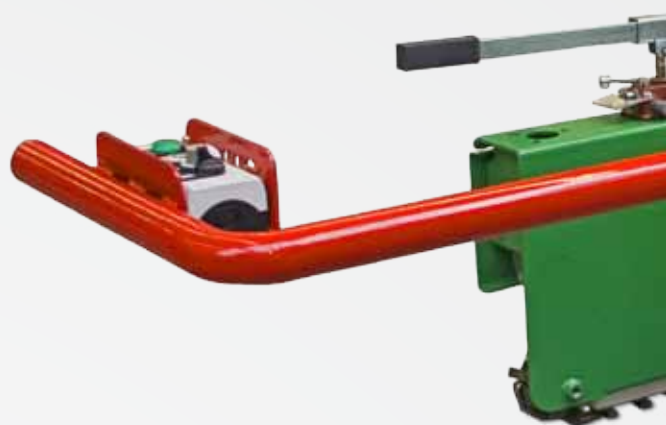
Subject to technical alterations

PlanoMatic P207

Small paver for the installation of synthetic sports surfaces on playgrounds, mini pitches or runways

The PlanoMatic P207 is the smallest paver in the product range of SMG. With a paving width of 1.100 mm it is ideal for the installation of synthetic sports surfaces on playgrounds, mini pitches or runways.

The P207 is driven by an electrical gear motor. The paving speed is variable adjustable owing to a frequency converter. The steering drawbar is equipped with operating elements for driving and the oscillation of the screed. By pushing sideways on the steering drawbar the drive of the machine will be determined. The screed is heated electrically. The temperature is adjustable by means of a thermostat and thereby kept constant. An adjustable seat can be added to the solid seat plate, which can be fold up for transport - it can be used double-sided according to requirements. The down-grade of the screed can be adjusted for an ideal compaction of the material. The paving thickness is adjustable via two hand wheels and can be changed manually at any time. The chassis of the P207 lifts up by using the hydraulic hand pump - transporting or rather moving the machine can be done by one person due to the little weight.





PlanoMatic P207



Steering arm, for the transport pivoted, with control elements for variable drive and oscillation of the screed bar



Seat plate, with adjustable seat, fits on both sides, for the transport pivoted



Grade setting of the screed bar, manual handwheel to adjust the installation thickness



Heated screed with limiters on the side for homogeneous and seamless installation

Recommended accessories for PlanoMatic P207



Aluminium shovel
Page 87



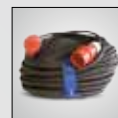
Solid string
Page 89



Generator E110
Page 86



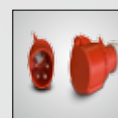
Measuring tape
Page 88



Extension cord
Page 87



Adapter cord
Page 87



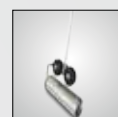
CEE Plug + Coupling 16 A
Page 86



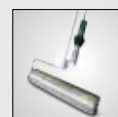
Smoothing trowel
Page 89



Hot trowel
Page 88



W10 / W20
Page 88



HR50 / HR70
Page 89



TestSet
Page 87



FloorTest FT50
Page 87



Gloves
Page 89



Disposable gloves
Page 89



Cotton gloves
Page 89



Hydraulically hand pump for the manual up/down lifting
of the machine

Chassis	Laser-cut steel frame construction, plastic-coated
Drive	Electric motor with frequency converter for variable speed from c. 0.8 m/min to 4.5 m/min
Chain drive	with standard chains 50 x 10 mm with special chains 153 x 50 mm (optional)
Screed bar drive	A.C. gear motor
Power	3 kW (4 HP) / 3 ph. / 400 V / 50 - 60 Hz / 16 A
Screed bar	Special profile with overflow edge for thickness from 6 - 50 mm, grade setting c. 10°, electrically-heated screed; ther- mostat regulation of screed temperature
Installation width	1.100 mm
Area performance	270 m ² /h
Weight	450 kg
Dimensions	L 1.400 x W 1.100 x H 700 mm
Subject to technical alterations	

StrukturMatic S122

Spray machine for structural spray coating of different viscosity and graining on synthetic sports surfaces

The StrukturMatic S122 is able to apply all structural spray coatings, solvent-based, solvent-free and water-based PU-dispersions used in the sports surfaces construction industry.

The machine is robustly constructed, extremely agile and easy to manoeuvre. With its swivelling, articulated bracket for the long spray hose it has an impressive action radius.

TurboSpray TS30 spraying pistol, with different material nozzles, is well-suited to handle thick, very compact and coarse-grained materials. Controllable pump pressure and adjustable air quantity reduce the spray vapour and produce a homogeneous spray finish at highest performance. Material throughput: 15 kg/min. We recommend our spray set PrimerSpray PS100 (optional) for low viscosity primer and sealers.

Charging is made easier for the users by the low filling height. The material feeding is turned on or off electrically on the spray pistol or manually by the control valve. The feeding quantity and the pump pressure can be coordinated and are infinitely adjustable. While spraying is going on the remaining material is continually mixed to prevent settling. The material container is plastic-coated and thus protected against corrosion and easy to clean.

All control elements are ergonomically positioned and easy to operate. Control valves, pressure control and pressure valve are also easily accessible.





StrukturMatic S122



Choice between 3-cylinder diesel or electric drive



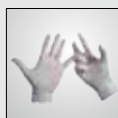
Control and regulating valves for feed pump and mixer spindle



Turbo Spray TS30

The spraying pistol TurboSpray TS30 with its different material and air nozzles is well-suited to handle thick, very compact and coarse-grained materials. With high performance (c. 15 kg/min) and precise handling it produces a homogenous spray finish.

Recommended accessories for StrukturMatic S122



Disposable gloves
Page 89



TS 30
Page 88



Cotton gloves
Page 89



Rolly K75
Page 89



Hearing protector
Page 89



Mixing bucket 75 liters
Page 89



Dust mask
Page 89



Hand drill
Page 88



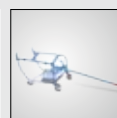
Protection shoe
Page 89



Drum wheelbarrow
Page 87



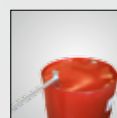
Safety glasses
Page 89



Drum support
Page 86



Drum cock
Page 86



Drum wrench
Page 87



Protective suit
Page 89



Sponge ball
Page 88



Adhesive tape
Page 89



Eye douche
Page 89

Chassis	Laser-cut steel frame construction, plastic-coated, 4 air-filled tires ø 400 mm
Main Drive	S122 E: electric motor 7.5 kW (10 HP) S122 D: diesel engine 12.1 kW (16.5 HP)
Material container	Laser-cut steel frame construction, plastic-coated, Capacity 120 liters
Spraying performance	15 kg/min
Filling height	900 mm
Drive	Hydraulic aggregate with tank, pump, control valve, control block; pump and compressor driven by motor via double V-belts; hydraulic tank capacity 15 liters
Weight	S122 E: 520 kg S122 D: 550 kg
Dimensions	L 2.000 x W 1.000 x H 1.170 mm
Subject to technical alterations	

StrukturMatic S80

Spray machine for structural spray coatings of different viscosity and graining on synthetic sports surfaces

The StrukturMatic S80 is based on the well-established technology of the SMG StrukturMatic collection. Being the compact version of the S122, the S80 is an ideal replenishment for professional structural coatings on synthetic sports surfaces. The machine is capable to work with solvent-based, solvent-free or water-based materials, especially on small areas. Equipped with a compact and air-cooled Honda 1-cylinder petrol engine or a 7.5 kW electric motor, the S80 achieves approx. 14 kg material throughput per minute and thus is nearly as effective as the S122 model.

Simple hydraulic components and the waiving of electronic components are making the machine reliable and easy to use. Four large air-filled tires and a weight of only 350 kg reduce the surface pressure and facilitate the machine's operation.

Material container, rotor, stator and the hose set with TurboSpray TS30 are extensively compatible with the S122 collection. Viscous, very compact and coarse-grained structural spraying coatings as well as primer and sealings can be applied by using different nozzles. Thanks to the variable hinged arm, an action radius of 10 meters is possible. A controllable pump pressure and an adjustable air quantity reduce the spray vapour and produce a homogenous spray finish - at a maximum area capacity.

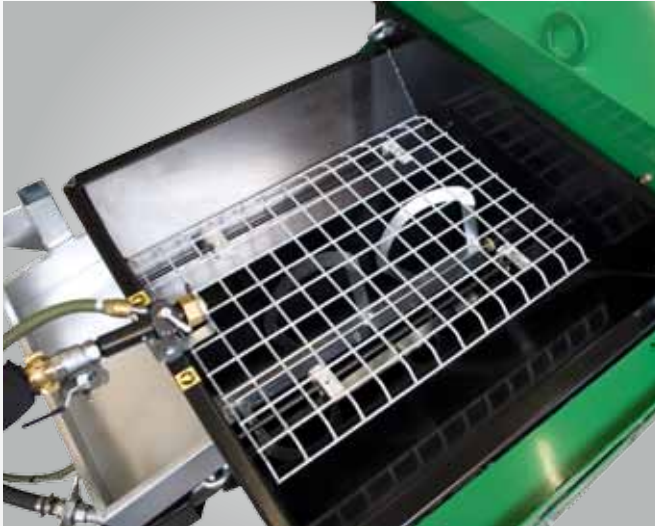
The low filling height of only 75 cm and a safety grid facilitate the charging of the machine and safe work for the operator. The material container is plastic-coated, impact-resistant, thus protected against corrosion. The material feed is switched on and off manually by means of a control valve. An electric control element/function, like the S122 provides, is not available. Feed quantity and pump pressure can be coordinated and are infinitely adjustable. The refilled spraying material is mixed simply and efficiently with the previous charge by the integrated mixer, preventing it from settling and guaranteeing a continuous material feed.

All functions and control elements are handily placed and can be read at a glance. The control valve, pressure control and pressure valve are also easily accessible.





StrukturMatic S80



Material container with mixing tool and flat shaft



Aircooled petrol engine for hydraulic - and compressor drive (electric motor available)



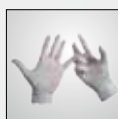
Control and regulating valves for feed pump and mixing tool



Turbo Spray TS30

The spraying pistol TurboSpray TS30 with its different material and air nozzles is well-suited to handle thick, very compact and coarse-grained materials. With high performance (c. 14 kg/min) and precise handling it produces a homogenous spray finish.

Recommended accessories for StrukturMatic S80



Disposable gloves
Page 89



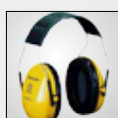
TS 30
Page 88



Cotton gloves
Page 89



Rolly K75
Page 89



Hearing protector
Page 89



Mixing bucket 75 liters
Page 89



Dust mask
Page 89



Hand drill
Page 88



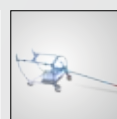
Protection shoe
Page 89



Drum wheelbarrow
Page 87



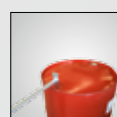
Safety glasses
Page 89



Drum support
Page 86



Drum cock
Page 86



Drum wrench
Page 87



Protective suit
Page 89



Sponge ball
Page 88



Adhesive tape
Page 89



Eye douche
Page 89

Chassis	Laser-cut steel frame consatruction, plastic-coated
Main Drive	S80 B: petrol engine 6.6 kW (8.9 HP) S80 E: electric motor 7.5 kW (10.2 HP)
Material container	Laser-cut steel frame consatructio, plastic-coated; safety grid permanently mounted; capacity 120 liters
Spraying performance	14 kg/min
Filling height	750 mm
Drive	Hydraulic aggregate with tank, pump, control valve, control block; Pump and compressor driven by motor via double V-belts; hydraulic tank capacity 8 liters
Weight	350 kg
Dimensions	L 1.800 x W 1.000 x H 1.070 mm
Subject to technical alterations	

MixMatic M930

Automatically controlled compulsory mixer for spray- and flow-coating, filler and adhesive

The MixMatic M930 is time-saving in the homogeneous mixing of materials. All switching and control elements for the use of the compulsory mixer are arranged in a very user-friendly way. Moving of the machine at the job site is very easy due to its rubber tires. Unnecessary loss of material is avoided by the working procedure being thought-out. The cleaning of the mixing tools in between is not necessary. Special mixing containers ensure a smooth operation.

The mixing takes place in mixing containers supplied with the machine. They are securely fixed in place. As soon as the components to be mixed have been put in, the machine can be hydraulically lowered and brought into working position by pressing a button. Before reaching the end position, the mixing motor automatically turns on. During the mixing process additional components can be added. At the end of the preselected mixing time the timer switches off the motor and the mixing machine goes back to its starting position. In the meantime an additional container can be prepared for mixing. The mixing head will then be swung over the prepared mixing container by hand and lowered as before.

The delivery of the machine includes two transport rollers and six mixing containers in which the mixed materials can be transported and emptied without problem.





MixMatic M930



Pivotal mixing head for problem-free working



Special mixing tool guarantees a homogeneous mixture



Steering panel with integrated timer for mixing cycles and automatically lifting of the mixing head



Transport rollers and mixing containers for easy transport of the material

Recommended accessories for MixMatic M930



Mixing head hydraulically liftable

Chassis	Laser-cut steel frame construction, plastic-coated
Drive	1.8 kW (2.4 HP) / 3 ph. / 400 V / 50 Hz 2-stage mixing speed, other voltage on request
Hydraulic	Hydraulic lifting power 0.37 kW
Electrical Equipment	Compact control in a housing protected against splashing, reversing switch for selecting turning direction and timer for setting infinitely adjustable mixing time
Capacity of containers	c. 75 liters
Mixing performance	c. 60 kg/2 min
Weight	180 kg
Dimensions	L 1.000 x W 600 x H 1.000 mm

Subject to technical alterations



Rolly K75

Page 89



Mixing bucket 75 liters

Page 89



Drum wheelbarrow

Page 87



Drum cock

Page 86



Drum wrench

Page 87



Bucket 10 liters

Page 88



Gloves

Page 89



Disposable gloves

Page 89



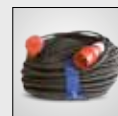
Cotton gloves

Page 89



Digitale Scale

Page 88



Extension cord

Page 87



Safety glasses

Page 89

MixMatic M5300

Automatic mixer for 2-component liquid self-levelling polyurethane coatings

Nowadays, high-quality liquid polymers for synthetic sports surfaces as synthetic surfaces or sandwich systems are mixed at the best by the MixMatic M5300. Especially certified (IAAF) high-performance sport facilities require constantly exact and homogenous material mixtures during the installation process.

The M5300 consists of each two suction pump as well as dosage pumps. These are driven by the three-phase current gear motors. During continuous operation frequency convertors enable mixing ratios of up to 10:1. The hoses are either connected directly to the material barrels or to the IBC-Container where the different liquid components will be aspirated and delivered to the pipe by means of the dosage pumps.

A special mixing tool mixes component A and B to a homogenous self-levelling polyurethane coating. Flow rate sensors control the suction process. The calibration of the machine can be carried out through the central control panel. Afterwards the mixer is switched on and off manually by means of the manual control. An optional material container also permits adding granulate or granulate powder. The M5300 has an output of up to 80 liters per minute. Truck-fork slots and hooks are available on all sides and thus guarantee a safe loading and transport.





MixMatic M5300



Suction and dosing pump for both components



Central control panel with timer and control lights

Recommended accessories for MixMatic M5300



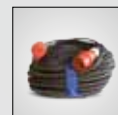
Frequency converter for ratios until 10:1

Chassis	Laser-cut steel frame construction, plastic-coated
Mixer pipe	Galvanized, connection for components on the side
Drive Pumps/Mixer	three-phase current gear motor infinitely variable via frequency convertor
Power	10 kW (13.6 HP) / 400 V / 50 - 60 Hz
Performance	80 liters/min
Weight	850 kg
Dimensions	L 1.400 x W 810 x H 1.500 mm

Subject to technical alterations



Generator E285
Page 86



Extension cord
Page 87



Drum wheelbarrow
Page 87



Drum support
Page 86



Drum cock
Page 86



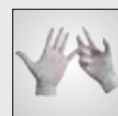
Drum wrench
Page 87



Scale
Page 88



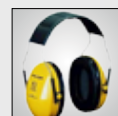
Gloves
Page 89



Disposable gloves
Page 89



Cotton gloves
Page 89



Hearing protector
Page 89



Safety glasses
Page 89

GranuMatic G402

Granulate blower for scattering rubber granulate when applying top coat

Top quality coatings of sports floors having an EPDM granulate upper surface requires a lot of know-how and special experience of spreading. For a perfect surface with secure coverage of the coating material, an even application layer and a sufficient quantity of granulate are absolutely essential.

The special challenge faced during the careful spreading required for the installation of a running track is to provide large granulate throw widths with a high degree of accuracy.

The spreader tube allows the spreading path of the granulate to be precisely controlled. Therefore, it is much easier to ensure that an equal surface structure will be obtained. The delivery capacity is approx. 50 to 75 kg/min, depending on the specification of the granulate. For continuous work, the material container must be topped up at regular intervals. The capacity of the material container is approx. 200 liters and therefore it serves as a buffer and feed container during the work operation.



Normally, this work is carried out by hand, using shovels. Consequently, achieving a large throw width is extremely labour-intensive and exhausting. The GranuMatic makes this work much easier. The heart of the machine comprises a very efficient rotary blower which is driven by a diesel engine. The flow of air generated by the blower conveys the granulate to a rotary vane feeder and via a flexible hose to a spreader tube. With this spreader tube, the granulate can be scattered in measured quantities in a radius of up to 12 meters.



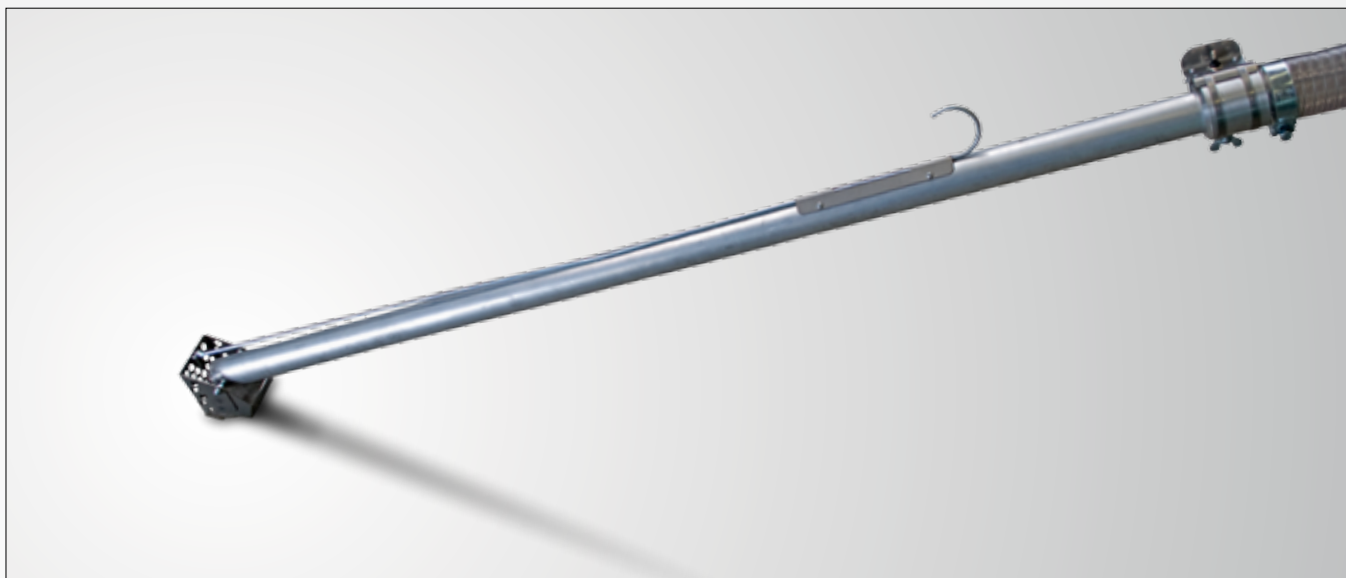
GranuMatic G402



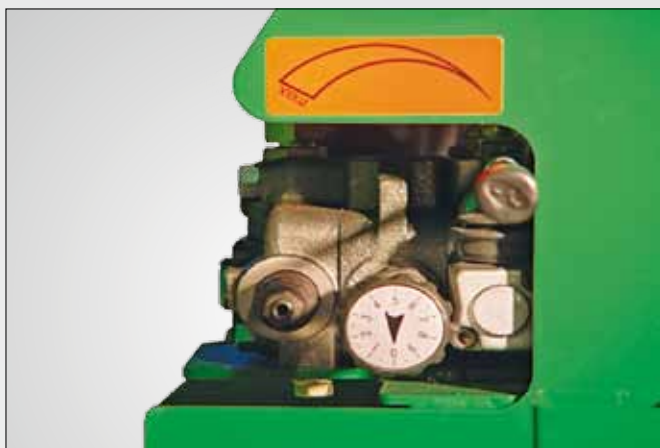
Diesel engine and rotary blower, compact placed



Rotary vane feeder with flexible hose



Granulate spreader tube with diffuser flap



Control and regulation valves, clearly arranged

Chassis	Laser-cut steel frame construction, plastic-coated
Drive	Diesel engine 12.1 kW (16 HP)
Scattering width	max. 12 meter
Performance	50 - 70 kg/min
Weight	580 kg
Dimensions	L 2.100 x W 1.000 x H 1.150 mm

Subject to technical alterations

Recommended accessories for GranuMatic G402



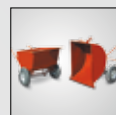
Leaves blower

Page 86



Aluminium shovel

Page 87



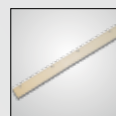
Wheelbarrow

Page 87



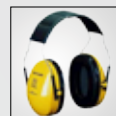
Rake

Page 87



Neopren-rubber stripes

Page 87



Hearing protector

Page 89



Cotton gloves

Page 89



Safety glasses

Page 89



Wheelbarrow

Page 88



TestSet

Page 87



FloorTest FT50

Page 87

LineStar LS15

Spraying machine for the precise marking of lines on synthetic sports surfaces, including synthetic grass

The lining and marking of sports surfaces require special accuracy and therefore high precision during application. In the majority of cases, national and international standards must be complied with. The quality of the result will be inspected by the customer or must be approved by testing authorities.

The concept and function of the LineStar LS15 are optimised to meet these demanding requirements. When used with professional expertise, this lining machine is capable of achieving the highest standard.

First and foremost is the comfortable handling, which significantly reduces the work load of the operator. The generously-dimensioned, powerful drive motor coupled to the compressor generates the compressed air required to power all functions. The pressure container for the line-marking paint delivers the required quantity directly to the precision spray gun. All adjustments necessary for precise application of the paint can be made there. The line width can be adjusted with exact precision via flexibly-mounted limiter discs. Wiper blades keep the limiter discs clean and guide the surplus paint back into a well-dimensioned collection tank.





All functions for handling the machine are arranged at the machine steering handlebar and are very easy to control. The spraying air and the paint for the spray gun are controlled from here. Raising and lowering the limiter discs can also be conveniently set via compressed air, as well as the contact pressure, the forward momentum and the setting for straight or curved lines. The paint delivery pressure in the pressure container can be adjusted at the pressure chamber. All setting values are displayed through pressure gauges and are therefore reproducible. The simple structure of the spraying system makes cleaning easy. On athletics tracks, smooth running is ensured through solid-rubber tires with precision bearings. To provide exact guidance for lining on artificial turf, an optional star wheel can be supplied.

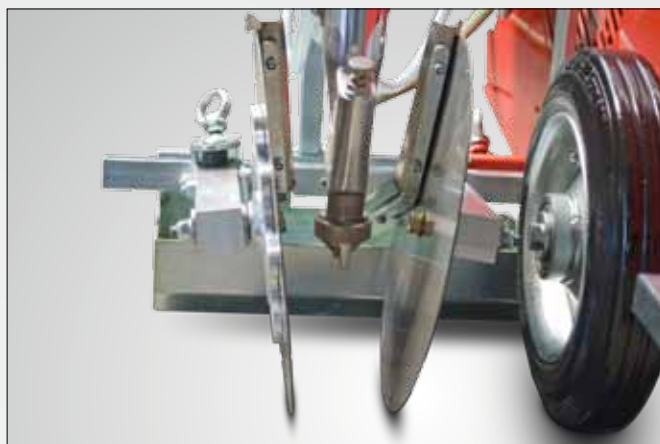
Using the LS15, line widths of 4 to 15 cm can be produced with line-marking paints, exactly as required. Generally, work is carried out using the nozzle size of 3.5 mm.

For safety during transport and storage, we recommend the SMG transport box.

LineStar LS15



Pneumatic control of all functions



Line-marking unit with limiter discs, line width adjustable



16-liters colour container, changeable



Pneumatic adjustable steering wheel to support the driving direction

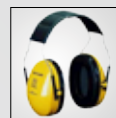
Recommended accessories for LineStar LS15



Compact SMG transport crate with fixing points

Chassis	Laser-cut steel frame construction, plastic-coated
Motor output	3.5 kW (4.8 HP) at 3.000 rpm
Compressor output	max. 360 liters/min
Colour container	16 liters
Pressure container	24 liters
Weight	120 kg
Dimensions	L 1.100 x W 600 x H 900 mm
Transport box	L 1.150 x W 700 x H 1.150 mm
Transport weight	150 kg

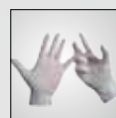
Subject to technical alterations



Hearing protector
Page 89



Adhesive tape
Page 89



Disposable gloves
Page 89



Cotton gloves
Page 89



Dust mask
Page 89



Safety glasses
Page 89



Brush
Page 86



Measuring tape
Page 88



Snip string
Page 86



Eye douche
Page 89

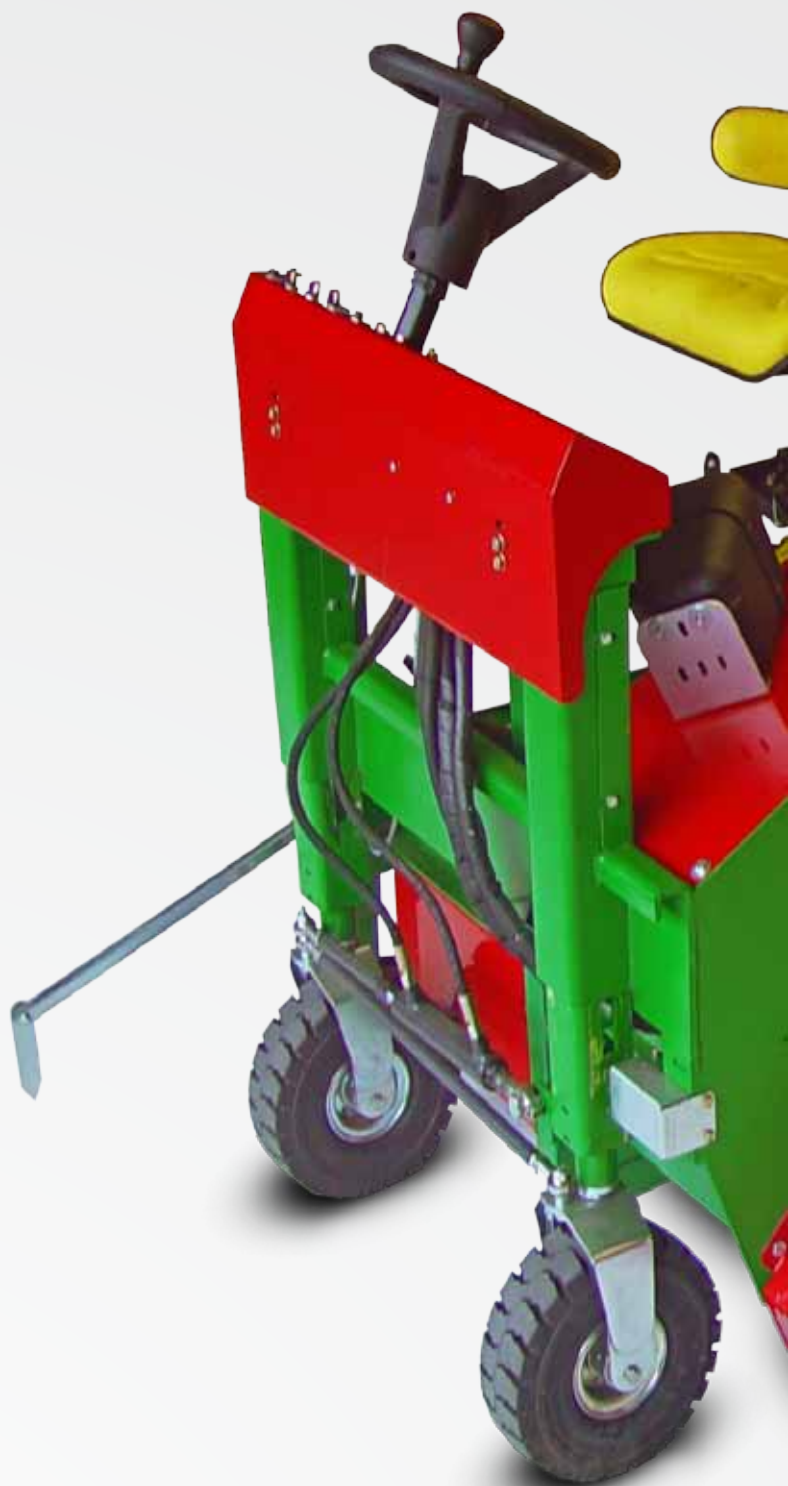
RauMatic R251

Milling machine for the renovation of elastic sports surfaces

The renovation of sports surfaces through abrasion of the surface layer and subsequent recoating is becoming ever more important as an alternative to complete renewal. The reason is, in this way, considerable costs and materials are saved. After the recoating, the thickness and consequently the technical properties of the surface coating remain preserved or may even be improved.

The RauMatic R251 is a milling machine for milling off the surface coating from elastic PU sports surfaces. In this process, the milling cylinder abrades the surface away with a speed of approx. 3.000 rpm. The milling cylinder is approx. 350 mm wide and equipped with milling discs which use tungsten carbide. The machine's built-in suction system immediately extracts the abraded material away from the milling tool and simultaneously cools the work area. In this way, any detrimental heating-up of the tools and the coating is prevented.

The material is immediately transferred into a filter unit. Cartridge filters separate the exhaust air from the abraded material. This is caught in a dirt container with a capacity of 500 liters and can be disposed of with a minimum of effort. The use of several interchangeable containers makes it possible to work continuously without prolonged interruption. The thickness of material to be abraded is regulated automatically in the millimeter range through a touch probe system. Thicknesses from 1 to 5 mm can be removed in one work operation. Depending on the quality of the substructure, the new surface layer can then be applied as required.





The drive for the machine is provided by an extra powerful diesel engine, producing 70 kW (96 HP) of power. The steering and the feed drive are provided using hydraulics. A hydraulic motor brings the filter cartridges into position in rotation for cleaning-off. When full, the dirt container can be hydraulically lowered for removal and is then replaced with an empty container.

RauMatic R251



Operator stand with control console



Milling cylinder with hardmetal discs



Filter unit with material container



4-cylinder (96 HP) turbo-diesel engine

Recommended accessories for RauMatic R251



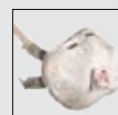
TestSet
Page 87



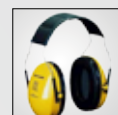
Aluminium shovel
Page 87



FloorTest FT50
Page 87



Dust mask
Page 89



Hearing protector
Page 89



Safety glasses
Page 89



Gloves
Page 89



Cotton gloves
Page 89



Scraper
Page 89

Chassis	Laser-cut steel frame construction, plastic-coated
Drive	Water-cooled 4-cylinder diesel engine 70 kW (96 HP)
Working Width	300 - 350 mm
Performance	c. 100 - 150 m ² /h
Milling removal (milling depth)	1 - 5 mm
Life of milling cylinder	5.000 - 7.000 m ²
Weight	1.500 kg
Dimensions	L 3.200 x W 1.300 x H 1.600 mm
Subject to technical alterations	

RotoMatic R80

Grinding machine with feed drive for elastic types of sports surfaces

The RotoMatic R 80 was especially developed for the grinding of elastic type sports surfaces.

The working width of the machine is 800 mm. Thus large-area grinding work can be performed, too. During the process of grinding the aggregate glides on two rails sideways, both height adjustable. They ensure a perfectly balanced grinding work.

The special design allows a clear view on the work surface and the grinding unit. The steerable chassis permits accurate directional manoeuvring. Feed speed is infinitely variable. The extremely robust hydraulic drive permits „use without manual effort“.

Operating the machine over a prolonged period of operating time is very easy due to the ergonomically arranged manipulating elements.

Three SMG hard metal grinding discs rotate on a circular support and thus grinding scratches on the surface are avoided.

The grinding unit can be lifted and lowered hydraulically. Feeding pressure and thickness of removal are variable. Consequently, the machine can be adapted to a wide range of grinding tasks.





RotoMatic R80



Ergonomical design of all control elements for the steering of the machine



The special arrangement of 3 rotating hard metal grinding discs moving around on a circular path prevents the development of scratches



During work the grinding unit glides on the ground via 2 lateral, height-adjustable glide bars; the adjustment of which determines the thickness of removal

Recommended accessories for RotoMatic R80



TestSet
Page 87



Aluminium shovel
Page 87



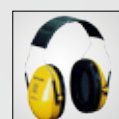
Hard metal disc
Page 88



FloorTest FT50
Page 87



Dust mask
Page 89



Hearing protector
Page 89



Safety glasses
Page 89



Gloves
Page 89



Cotton gloves
Page 89



Scraper
Page 89

Chassis	Laser-cut steel frame construction, plastic-coated
Drive	4-cylinder petrol engine 14.6 kW (20 HP) hydrostatic wheel drive
Working width	c. 800 mm
Area Performance	Grinding surface 150 m ² /h, dependent of type of surface and grinding removal
Grinding removal (grinding depth)	1 - 2 mm by one operation
Life of grinding tools	2.500 m ² /h - 5.000 m ² /h, dependent of type of surface and grinding removal
Weight	500 kg
Volume of tank	15 liters
Dimensions	L 1.500 x W 900 x H 1.000 mm
Subject to technical alterations	

RotoMatic R58

Grinding machine for elastic synthetic sports surfaces

The grinding machine RotoMatic R58, with its compact construction, is extremely suitable for grinding elastic synthetic sports surfaces, particularly on small areas, boundary zones, alongside curbstones and for projecting boundary lines. The RotoMatic R58 is steered by hand and the operator has a clear view of the work surface and the edge of the grinding disc. Three solid rubber wheels on bearings enable easy manoeuvrability and ensure an accurate and safe operation. The arrangement of the wheels prevents the grinding disc from tilting, even when the surface is uneven.





The grinding disc is mounted on the crankshaft of a 4-stroke petrol engine. In this way the power provided by 13 HP is directly transmitted to the grinding area. The adjustable grinding pressure is set by hand and held constant by the machine. This prevents fast wear of the grinding disc and damage to the surface. For a brief interruption or when the work is finished, the grinding unit can be pivoted upwards by a Bowden cable, and locked in this raised position by a security lever. With a few simple touches the RotoMatic R58 can be fold up for transport or storage and requires little space.

RotoMatic R58



SMG hard metal grinding disc Ø 300 mm



Push-rod with control levers for engine speed (accelerator) and for the lifting of the grinding disc



Drive engine and grinding unit in compact construction



Pressure for the grinding disc is manually adjustable

Recommended accessories for RotoMatic R58



Foldable steering arm for easy transport and storing in a small place



TestSet
Page 87



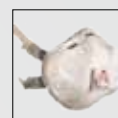
Aluminium shovel
Page 87



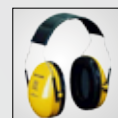
Hard metal disc
Page 88



FloorTest FT50
Page 87



Dust mask
Page 89



Hearing protector
Page 89



Safety glasses
Page 89



Gloves
Page 89



Cotton gloves
Page 89



Scraper
Page 89

Chassis	Laser-cut steel frame construction, plastic-coated
Main drive	1-cylinder petrol engine 9.6 kW (13 HP)
Capacity of tank	2.3 liters
Area performance	70 m ² /h
Working width	300 mm
Weight	65 kg
Dimensions	L 800 x W 400 x H 450 mm

Subject to technical alterations

TrackCutter TC400

Application prior to the stripping of worn sport surfaces made of granulate or solid synthetics by ripping the surface into manageable panels or stripes

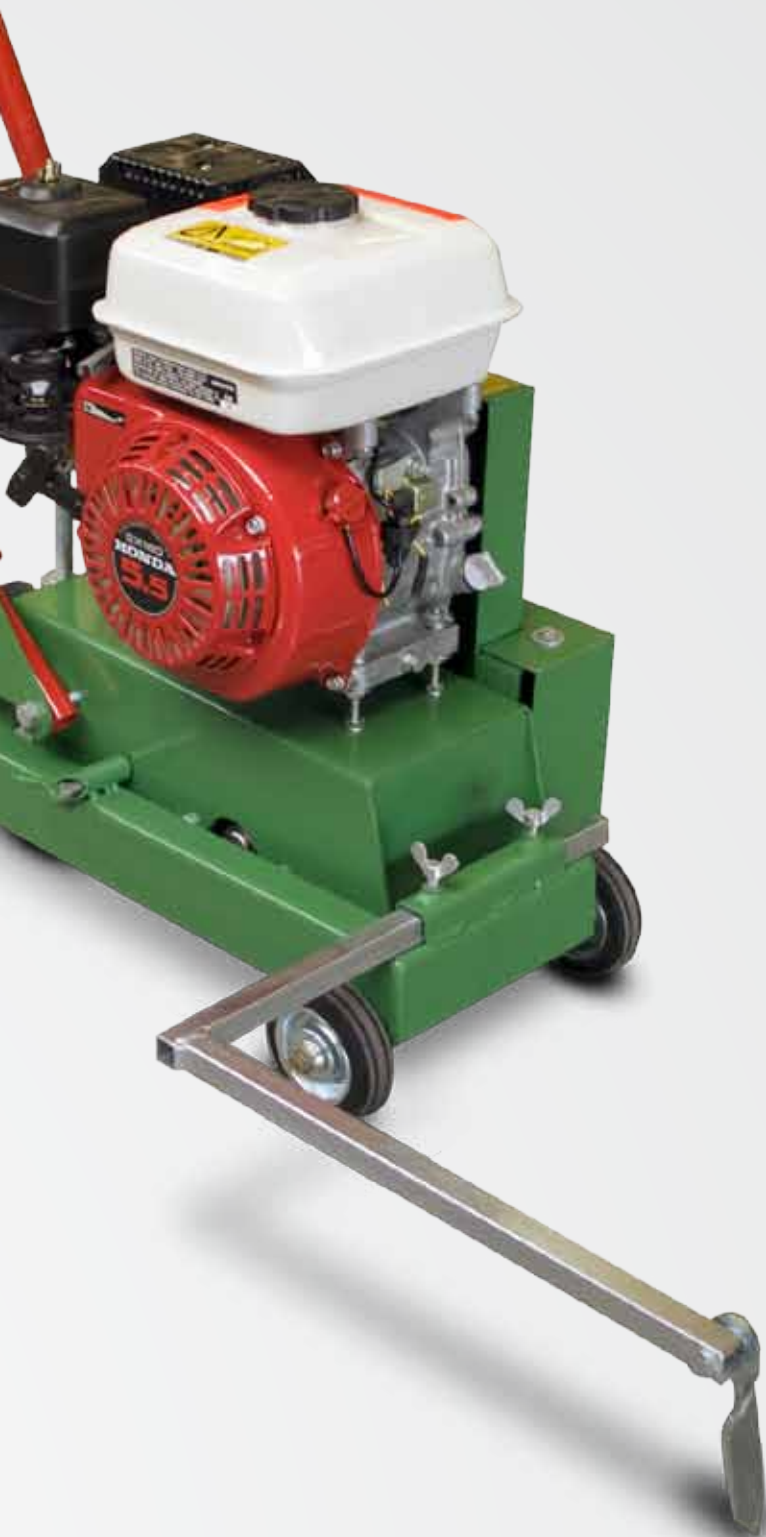
The removal of unusable or worn sport surfaces made of granulates or solid synthetics is particularly problematic. The base, which is usually asphalt, can be detached relatively straight forward by means of a suitable stripping unit, nevertheless the surface produces undefinable panels and strips owing to the consistency of the material.

The TrackCutter cuts all elastic surfaces made of rubber granulates or PU into manageable panels or strips measuring approx. 1.00 m x 1.00 m by preference.

A wear resisting fly cutter separates the surface. The cut depth can be adjusted infinitely variable from 0 - 25 mm. A side-marker permits cut widths of up to 1.00 m.

The cutting capacity is c. 400 m²/h using a cut depth of 10 mm and panel size or a cutting distance of 1.00 m. It is further possible to use the TrackCutter for the refurbishment of a surface. Therefore, cutting out damaged areas is much easier and quicker. An adjustable marker permits effortless cutting alongside of edgings and run-off gutters.





Cutting the surface prior to stripping it provides following advantages:

- Stripping is considerably easier
- Cut pieces can be lifted and piled up without difficulty
- Stacking and transport on pallets is more economical
- a better utilization of loading capacity in the case of road transport
- cost savings due to easy handling when recycling

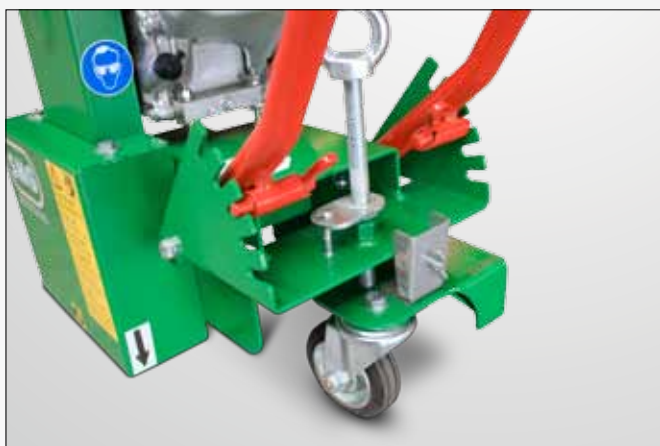
TrackCutter TC400



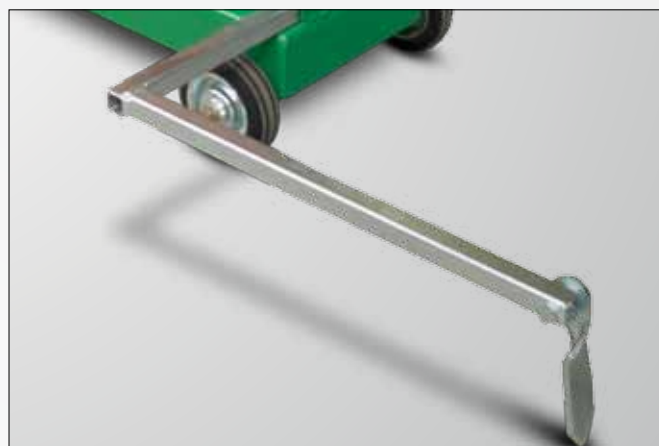
Powerful propelling of the cutting tool by a 1- cylinder 4-stroke gasoline engine



Cutter head with 4 hard metal knives (without protective cover)



Cut depth adjustable from 0 to 25 mm, secured against self-acting shifting



Adjustable dipstick for an exact cutting alongside of edgings and run-off gutters

Recommended accessories for TrackCutter TC400



TestSet
Page 87



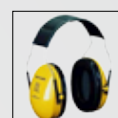
FloorTest FT50
Page 87



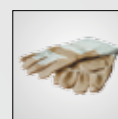
Snip string
Page 86



Aluminium shovel
Page 87



Hearing protector
Page 89



Gloves
Page 89



Safety glasses
Page 89



Measuring tape
Page 88



Scraper
Page 89



Dust mask
Page 89

Chassis	Laser-cut steel frame construction, plastic-coated
Drive	1 cylinder petrol engine 4 kW (5.4 HP)
Weight	c. 45 kg
Dimensions	L 550 x W 400 x H 700 mm (Transport dimensions)
Subject to technical alterations	

Accessories



Generator E110

optional with cart, 11 kVa / 400 V / 50 - 60 Hz

Art.-No. 8700005



Generator E285

30 kVa / 400 V / 50-60 Hz

Art.-No. 8700008



CEE Plug + Coupling 400 V / 32 A

Art.-No. 3400237 (Plug)

Art.-No. 3400215 (Coupling)



CEE Plug + Coupling 400 V / 16 A

Art.-No. 3400204 (Plug)

Art.-No. 3400212 (Coupling)



Drum support with handle

Art.-No. 3202284



Drum cock

Art.-No. 3200514



Extension cord

400 V - 25 m

Art.-No. 6307016



Adapter cord

16 A Plug / 32 A coupling

Art.-No. 3203198



Cable reel

220 V - 50 m

Art.-No. 3202488



Drum wheelbarrow

Art.-No. 3202487



Drum wrench

Art.-No. 6200860

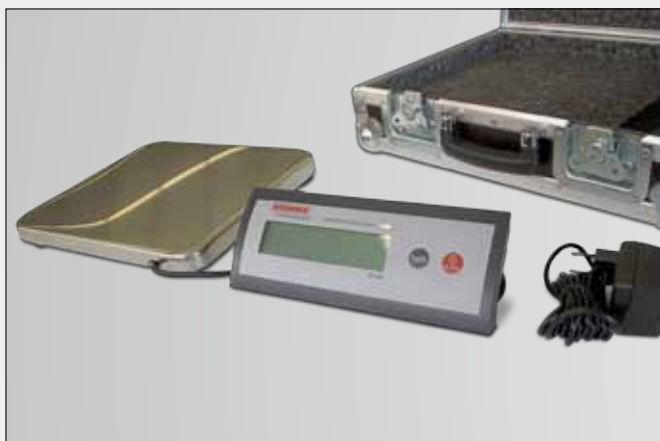


Wheelbarrow

250 liters

Art.-No. 3202564

Accessories



Digital scale

with case

Art.-No. 3202185



Wheelbarrow

85 liters

Art.-No. 3202353



Bucket

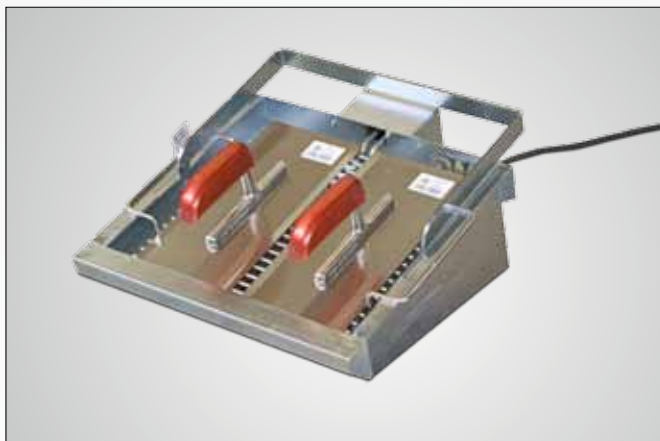
10 liters

Art.-No. 3202332



Hand drill

Art.-No. 3202339



HotTrowel

Electrically heated device for heat up smoothing trowels.

Art.-No. 8900021



W10 and W20 Hand rollers optional additionally weight

W10 (50 cm) Art.-No. 8900007

W20 (70 cm) Art.-No. 8900009



Rolly K75

Art.-Nr. 8900006



Mixing bucket

75 liters

Art.-No. 3200634



Smoothing trowel (280 mm)

Art.-No. 3202338



Smoothing trowel (500 mm)

Art.-No. 3202333



HR50 and HR70 The "Hot Roller"

HR50 (50 cm) Art.-No. 8900025

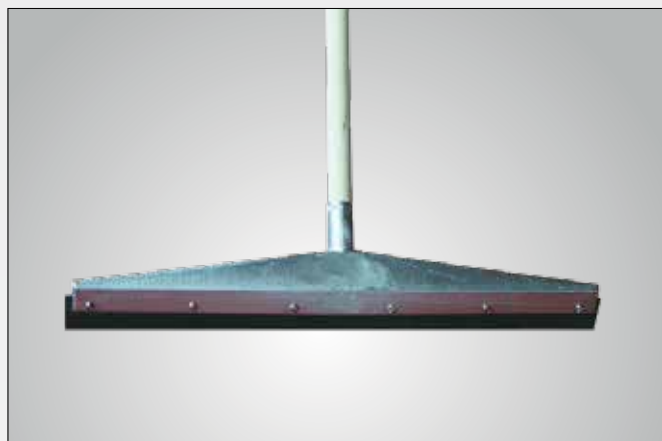
HR70 (70 cm) Art.-No. 6400119



Scraper

Art.-No. 3202334

Accessories



Rubber wiper
(600 mm)
Art.-No. 3202324



Wiper blade
(600 mm)
Art.-No. 3202323



Leaves blower
Art.-No. 8900067



Leaves vacuum
Art.-No. 8900068



Brush
Art.-No. 3202341

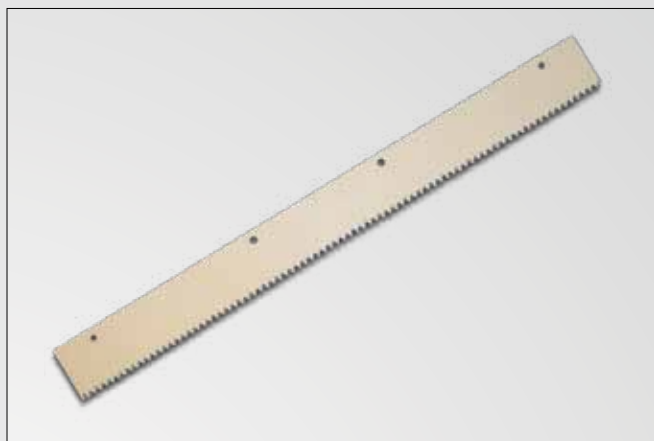


Snip string
Art.-No. 3202352



Rake

Art.-Nr. 3202517



Neopren-rubber stripes Art.-

No. 3202318 (3 mm)

Art.-No. 3202319 (4 mm)

Art.-No. 3202313 (5 mm)

Art.-No. 3202315 (6 mm)

Art.-No. 3202134 (7 mm)

Art.-No. 3202317 (8 mm)

Art.-No. 3202321 (10mm)



FloorTest FT50

Art.-Nr. 6400104



TestSet

Measuring tools for paving: PlanoTest PT2 for the checking of unevenness, FloorTest FT50 for measuring of thickness of synthetic sports surfaces, Measuring Wedge MK 30 for measure of unevenness

Art.-No. 6400086



Aluminium shovel

Art.-Nr. 3202348

Accessories



TurboSpray

Spraying pistol for thick, very compact and coarse-grained materials; with high performance and precise handling it produces a homogenous spray finish

Art.-No. 6400089



Sponge ball

D30 soft

Art.-No. 3202687



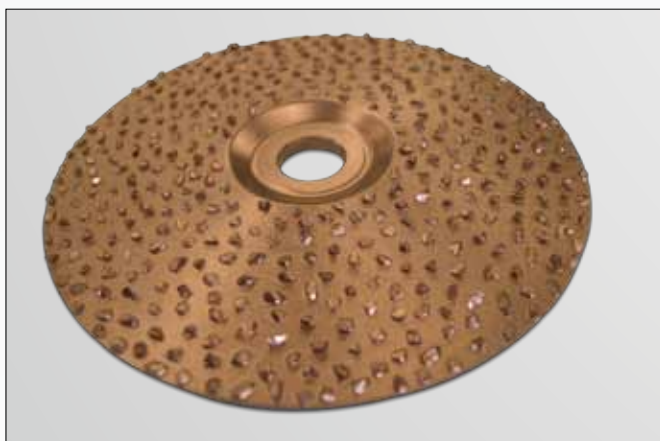
Tool box (127 parts)

Art.-No. 3204115



Tool set

Art.-No. 1200304



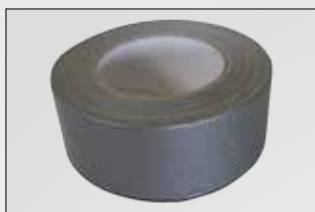
Hard metal disc

Art.-No. 3202309



Measuring tape Length: 100 m

Art.-No. 3202149



Adhesive tape

Art.-No. 3202490

(50 mm)

Art.-No. 3202491

(100 mm)



Gloves

Art.-Nr. 3202340



Hand cleaning gel

for removal of paints,
varnishes, oils, bitumen and
rubber compounds

Art.-No. 3204446



Dust mask

Filtering half masks to protect
against dust and spray mist

Art.-No. 3204447



Eye douche

Art.-Nr. 3202328



Protection shoe

universal dust-tight protection
shoe with elastic band

Art.-No. 3204448



Hearing protector

for helmet mounting

Art.-No. 3204450



Hearing protector

Art.-Nr. 3204451



Solid string

Length: 50 m

Art.-No. 3202345



SMG Spray bottle

Art.-No. 3204243



Disposable gloves

in dispenser box (100 p.)

Art.-No. 3204365



Protective suit

Art.-No. 3202801



Safety glasses (clear)

scratchproof, adjustable,
mist-free

Art.-No. 3204449



Cotton glove

knitted cotton-fabric gloves
e.g. to slip over disposable
latex glove

Art.-No. 3204364



Hard hat (DIN EN 397)

safety helmet with leather
sweat band, ventilation, rain
gutter, adjustable, hearing
protection

Art.-No. 3204452



MultiSpray MS30

Spray gun for small repairs
and patching works

Art.-No. 6400121



Field

Since nearly 20 years SMG has been developing and producing tools, devices and machines for the installation and maintaining of artificial turf. The product range varies from installation carts over cutting tools up to effective infill machines for sand and rubber granulate.

For the suitable maintenance of artificial turf surfaces SMG offers over 10 different maintenance and cleaning machines. Manually operated devices for mini pitches, variable sized and equipped self-driven machines and different attachments for tractors fulfill every customer's needs. The maintenance and cleaning features of the SMG machines meet the suggested maintenance Measuring tapes of the grass suppliers, UEFA and FIFA. The most of the SMG machines can also do the necessary basic and deep cleaning. Machines for non-infilled artificial turf e.g. hockey pitches complete the product range.

TurfRoller TR5000

Installation cart with hydraulic lifter for the transport and rolling out of artificial turf

By using the TurfRoller TR5000 for laying of artificial turf the user will benefit from a considerably reduced workload because this device makes the transport and laying of turf rolls very easy.

In contrast to the traditional laying practice being characterized by a labour-intensive, energy-involved and time-consuming adjustment of the turf rolls, the reasonable construction of the TurfRoller TR5000 allows a precise positioning and rolling out of a turf roll making a subsequent adjustment nearly unnecessary. The TurfRoller TR5000 is able to lay artificial turf rolls of up to 5 m width.

The TurfRoller TR5000 consists of two carts. Each cart is equipped with two steerable double pneumatic tires being steered by a drawbar.

A square crossbeam connects both carts to a transport unit with 4 pairs of wheels in order to take the total weight. Thereby a minimal surface pressure on the subbase is guaranteed and thus the transport on unbounded elastic layers is an effortless business.

Every cart is equipped with a steering drawbar. The professional steering mechanics of the cart allows both wheel pairs to be steered or only the wheel which is turned to the steering drawbar while the other one is locked. Thus the TR5000 is variable and precise to manoeuvre in all directions.

Both carts are equipped with a lifting unit composed of a hand pump and hydraulic cylinder to carry the transport pipe for an easy lifting and lowering of the artificial turf roll.





TurfRoller TR5000



Turf roll widths from 1.0 to 5.0 m transportable



Hydraulically lifted, easy to transport



Hand pump for easy up/down of the turf rolls



Once disassembled the machine can be transported in a space-saving way



Cart variable adjustable for easy maneuver and precise unrolling of the turf

Chassis	Laser-cut steel frame construction, plastic-coated; 8 pneumatic tires ø 1.200 mm
Lifting height	400 mm
Lifting power	c. 1.500 kg
Weight	c. 200 kg
Dimensions	L 1.300 x W 1.100 x H 1.500 mm
Subject to technical alterations	

Recommended accessories for TurfRoller TR5000



TurfFix
Page 142



TG30 / TG60
Page 142

TurfSet

The complete tool set for the professional installation of artificial turf



SeamFix

Pressure tool for the solidified connection of the seams of artificial turf and glue coated seam tape.



GlueFix GF300

Glue applicator for glue coating of seam tape for artificial turf. Stationary version.

**LineCutter**

For cutting of variable width of straight lines and circular lines in artificial turf.

**CircleCutter**

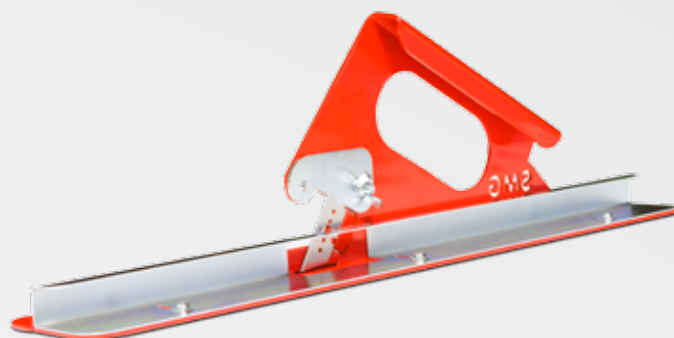
Tool for perfect circular cuttings in artificial turf

TurfSet



TurfGrip (2x)

Gripping tongs for a fast and easy paving of artificial turf



GrassCutter

Proper cutting alongside of existing track seams of artificial turf



EdgeTrimmer

For trimming of artificial turf strips



FloorTest FT50

Measuring tool for synthetic sports surfaces and infilled artificial turf surfaces. Range 0 – 50 mm



Safety Cutter (5x)



Knife blades (25x)
5 sets of 5 pieces



Measuring tape (100 m)

SandMatic B1005

Fully automatic infilling machine for exact dosage of sand and rubber into modern artificial turf surfaces

The SandMatic B1005 is a compact automatic and self-driven infilling machine for the exact dosage of sand and rubber into modern artificial turf surfaces. Equipped with the innovated brush technology of the proven SandMatic B1503 and B1505, this machine meets the specific requirements needed for the modern artificial turf systems even if the pile is extremely high. The infilling material is spread out in proportion to the speed at which the machine is running. A slide valve enables the quantity of material strewn to be constantly variable from 2.5 - 40 kg/m². A free-hanging brush unit with separate, rubber-cushioned brushes straightens and evens out the carpet pile. The sand is spread at the same time, thus stabilising the pile while the oscillating brush unit which follows carefully, and in one process, works the material into a level surface. The SandMatic B1005 can spread out and work the material into the surfaces either forward or backward. An overdrive allows quick manoeuvres. Therefore the efficiency of the machine is considerable – with an infilling power between 1 and 10 m²/min.

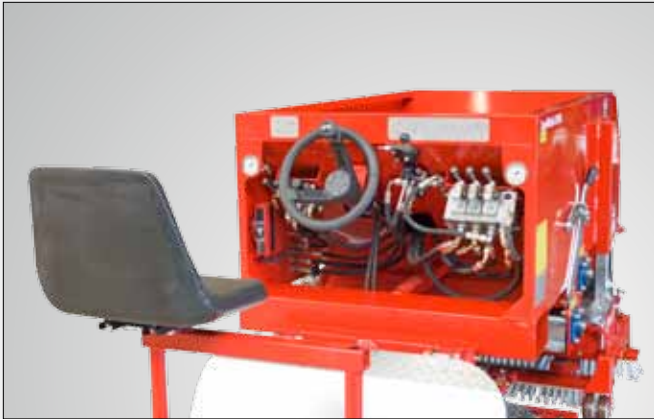
The working width is 1.000 mm. The machine is driven by a 1-Cylinder petrol engine with a performance of 9 HP. A comfortable driver seat with adjustable seat position (left/right) guarantees clear work and an ergonomic operation. Thereby the working direction and the positioning of the traveller can be adapted at an optimum to the structural condition on the jobsite. All the machine's functions can be controlled hydraulically, thus the B1005 is easy to maintain and use. The volume of the container is 0.8 t/ 1m³. Bulk material, material in bags or small BigBags are ideal for the in-feed of the B1005. A paddle shaft which can be activated breaks up clumped rubber.

The weight of the machine is supported by 6 large tires. So the machine when filled conforms to the permitted ground pressure for the subbase. Forklift slots make loading by a forklift a safe operation.





SandMatic B1005



Comfortable driver platform with seat, allows overview and ergonomically operation.



Brush unit for straightening and evening out the pile and brushing in the filling material



Material output exact adjustable through a slide valve



6 large wheels for minimum ground pressure and easy manoeuvring

Recommended accessories for SandMatic B1005



Petrol engine and hydraulic unit

Chassis	Laser-cut steel frame construction, plastic-coated
Drive	1-Cylinder Honda petrol engine / 6.6 kW (9 HP)
Control	Hydraulic
Hydraulics	Hydraulic tank 40 liters
Tires	(20x10.00-8) 2 pc. front; (16x6.5-8) 4 pc. back
Spreading width	1.000 mm
Spreading quantity per pass	Sand: 2.5 - 40 kg/m ² Rubber: 0.5 - 15 kg/m ²
Spreading performance	1 - 10 kg/m ²
Machine weight when empty	800 kg
Max. filling weight / Container volume	0.8t / 1m ³
Dimensions	L 2.800 x W 1.320 x H 1.283 mm

Subject to technical alterations



TestSet
Page 87



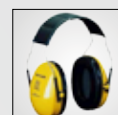
FloorTest FT50
Page 87



Aluminium shovel
Page 87



Solid string
Page 89



Hearing protector
Page 89



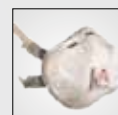
Measuring tape
Page 88



Cotton gloves
Page 89



Safety glasses
Page 89



Dust mask
Page 89

SandMatic B1505RC

Fully automatic infilling machine for exact dosage of sand and rubber into modern artificial turf surfaces

The SandMatic B1505RC fully meets the special demands placed on it by ultra-modern artificial turf surfaces and even when the pile is extremely high the prescribed amounts of sand or granulate will be exactly distributed and worked into the system by use of non-rotating/oscillating brushes. A free-hanging brush unit with separate brushes straightens and evens out the carpet pile. The sand is spread at the same time, thus put upright the pile. The oscillating brush unit which follows carefully, is adjustable in height and works the material into a level surface in one process. The required quantities of sand and rubber granulates are exactly dosed and spread in proportion to the speed at which the machine is driving. A slide valve enables the quantity of material strewn to be constantly variable from 2.5 - 40 kg/m².

Driving speeds from 1 m/min to 15 m/min make the machine flexible in use. The working width is 1.5 meters. This gives a theoretical performance of 1.5 to 22.5 m²/min. The machine is driven by a 3-Cylinder Kubota diesel engine with a performance of 18.4 kW (25 HP).

All functions are performed by the compact radio control which makes the operation method more comfortable and expedites the working process. The machine can be also controlled manually by means of the operating panel in case of an unlikely breakdown of the remote control. The weight of the machine is supported by 8 air-filled, low-pressure tires. So, the machine, when filled, conforms to the permitted ground pressure for the synthetic surface. The four pairs of wheels can be pivoted through 120° for extremely easy manoeuvres. Forklift slots make loading by a forklift a safe operation.





SandMatic B1505RC



Material output exactly adjustable through a slide valve



Water cooled 3-cylinder Kubota diesel engine



Remote control with 100 m range



Brush unit for erecting the pile and brushing in the infill

Recommended accessories for SandMatic B1005



4 pairs of large wheels for minimum ground pressure and easy manoeuvring



TestSet
Page 87



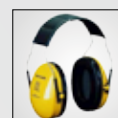
FloorTest FT50
Page 87



Aluminium shovel
Page 87



Solid string
Page 89



Hearing protector
Page 89



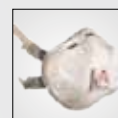
Measuring tape
Page 88



Cotton gloves
Page 89



Safety glasses
Page 89



Dust mask
Page 89

Chassis	Laser-cut steel frame construction, plastic-coated
Drive	3-Cylinder Kubota diesel engine / 18.4 kW (25 HP)
Control	Electro-hydraulic 12V d. c.
Hydraulics	Hydraulic 6 liters/min; 120 bar Mobile hydraulics 50 liters/min; 100 bar
Tires	8 x ø 420 x 160 mm
Spreading width	1.500 mm
Spreading performance	2.5 - 40 kg/m ²
Machine weight when empty	1.300 kg
Max. filling weight / Container volume	1.5t / 3m ³
Dimensions	L 1.250 x W 2.650 x H 1.350 mm

Subject to technical alterations

SportChamp SC2



For cleaning and maintaining sand or granulate infilled artificial turf surfaces and other fully synthetic sports surfaces

The SportChamp, the leading machine in the world market, is the solution for the maintenance of different synthetic sport surfaces within a sports facility. By the use of different attachments all synthetic sport surfaces can be cleaned and maintained according to the manufacturer's instructions and beyond that for an efficient and economic upkeep of the surface.

During weekly use, the SportChamp levels the infill material of filled surfaces with the rotary brush and eliminates contamination at the same time. Thus the infill material will be loosened and the fibre will be put upright again.

Fibres lying loosely on the turf and even well-rehearsed fine dirt will be vacuumed in a large-volume filter box during the surface maintenance by the proven extraction system. The filter unit is controlled automatically and cleaned within minutes. It will be evacuated - controlled hydraulically - quite conveniently while sitting on the driver seat.

Numerous attachments facilitate and expedite the necessary maintenance tasks. The range includes attachments for the winter services and the refilling of infill material, for the removal of leaves, the loosening of extreme compaction and the spraying of care products. The application area of the SportChamp is enlarged by additional attachments for non-infilled artificial turf, synthetic sports surfaces or sidewalks. Thereby it is the multifunctional care and maintenance machine for your sports facility.

Beside the classic, weekly maintenance tasks the SMG SportChamp can additionally carry out the annual basic and deep cleaning

Cleaning sand or granulate-infilled artificial turf

Only if a newly-laid artificial turf surface is regularly cleared of dirt from the first day onwards, it will continue to allow surface water to drain away. This necessary cleaning procedure also hinders the growth of moss and algae and so preserves the artificial turf's physiological characteristics. Depending on the condition of the surface and how dirty it has become, either the trailing brush combined with the suction turbine for fine dirt particles is used, or the rotating brush for coarser particles and air-borne dirt. Since the appliances are attached at the front every corner is cleaned and the specially strewn material is immediately replaced.

Cleaning fully synthetic turf

These sports surfaces are exposed to the same influences as sand or granulate-infilled artificial turf: weather and continual use adversely affect the quality of the material. The SportChamp, with the contra-rotating brush unit and its hydraulically operated sweepers will keep your fully synthetic turf in absolutely first-class condition. Only the SportChamp's contra-rotating brushes are capable of straightening out the crushed fibres in no time at all. The powerful suction turbine, in conjunction with the brushes, picks up the dirt in an environmentally-friendly process and deposits it in the large filter box. Fully artificial turf surfaces are regularly sprayed with water that is retained for a long time and this creates ground conditions that present conventional brush and suction appliances with insoluble problems.

But not the SportChamp – the only cleaning machine for synthetic surfaces with an interchangeable filter system! With this machine it is possible to clean wet playing areas without it being necessary to reduce the suction power or switch the turbine off altogether. Regularly cleaned with the SportChamp, your artificial turf will fulfill all the requirements for a top class playing surface. SportChamp: no dirt, no dust, no bits of felt and you will always have a well-maintained surface on which the balls roll true!

Easily accessible machine elements simplify the service work and reduce the time required to a minimum, so you always have a maintenance machine ready for use - and therefore an optimal surface. The hydrostatic drive and lifting mechanisms facilitate the work of the personnel using it. That is the way maintenance is fun. The machine is constructed in a way that it adapts exactly to the surface pressure required for synthetic surfaces. The SportChamp can be used on surfaces with unbounded base layers and even driving across the rain drains is possible.



SportChamp SC2



Practical coupling system for mounting all attachments without tools



Clearly arranged display – easy to operate



SportChamp SC2B/D:
Hydraulic lifting for tipping the filter box



Tires specially for use on grassy surfaces ensure low pressure on the ground



SportChamp SC2D 4HL:
hydraulic high-level emptying up to 2.000 mm



The vibrating screen separates dirt from the infill and spreads the infill on the artificial turf again at the same time

Chassis	Laser-cut steel frame construction, plastic-coated
Drive	SC2B: 3-cylinder petrol engine, water cooled / 18.5 kW (25 HP) SC2BL: 2-cylinder petrol engine, air cooled / 17 kW (22 HP) SC2D / SC2D 4HL: 3-cylinder-Diesel engine, water cooled / 18.5 kW (25 HP)
Gearing	Hydrostatic, speed up to 10 km/h Hydraulic lifting device for accessory attachments and filter box; Differential lock
Capacity of Tank	c. 20 liters
Brush working width	according to brush: 900 - 1.600 mm
Filter box capacity	with filter unit for dry surfaces: c. 150 liters with special filter sieve: c. 400 liters
Weight	from c. 680 kg
Dimensions	SC2: L 2.300 x W 1.050 x H 1.500 mm

Subject to technical alterations

Recommended accessories for SportChamp SC2



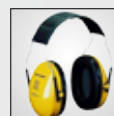
FloorTest FT50
Page 87



Leaves blower
Page 86



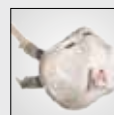
Gloves
Page 89



Hearing protector
Page 89



Safety glasses
Page 89



Dust mask
Page 89

SportChamp SC2



Rotating brush device



Rigid brush device



Opposed brush



Sand / Rubber spreading device



Foliage vacuum device



Decompacting brush



Sweeping brush device



Opposed brush



Vacuum hose device



Spray device



Snow blower device



Snow plow

CareMax CM2

Small tractor with rear-mount attachment for the cleaning and maintenance of artificial turf with sand and/or rubber granulates infilling

The CareMax CM2 can perform several proven functions for the efficient cleaning and maintenance of infilled artificial turf pitches. Driven by a water-cooled diesel engine with 21 HP, the compact machine manages the cleaning and maintenance of a typical sized pitch in relatively short time. A rotary brush at the back of the CareMax CM2 guarantees perfect results. The rotary brush removes the very upper layer of infill material during its operation. This brush is also depth adjustable. During this process an oscillating sieve separates dirt from the infill material. The vibrating screen can be precisely adjusted, with variable settings from 4 to 10 mm, depending on and according to the conditions of infilled material.

The integrated suction turbine separates the dust from the infill material. The permanent filter will provide a continuous cleaning effect. The now cleaned infill material will be returned to the system. The CareMax CM2 manages all the above functions during one single operation and thus enables the cleaning and maintenance of artificial turf in a simple and time-saving manner.

The rear-mounted accessory can be lifted hydraulically for transport. Two guide pulleys enable precise operation along sideboards.

The CareMax CM2 is equipped with oscillating suspended triangular brushes mounted underneath the machine as well as a rear-mounted drag brush providing a working width of 2.400 mm. During the operation the fibres are brought into an upright position, the infill material will be levelled and due to the action of the integrated turbine the fibre dust and/or other pollutants as well as dust are being removed through the suction turbine. The triangular brush sections can be lifted for easy transporting.

The hydraulically actuated, depth-adjustable tines will assist the decompaction of the infilled systems. Due to its relatively large working width the CareMax CM2 is able to perform the regular maintenance functions in a time-efficient way.

The CareMax CM2 and its integrated proven technology will assure that the physical performance characteristics of the artificial turf will be maintained at all times. Regular and accurate maintenance will and do provide not only optimal playing conditions but also will maintain the attractive appearance of the facility.





CareMax CM2



Rear-mount attachment with integrated rotary brush, drag brush, guide pulley and transport rollers



Permanent filter with continuous dedusting of filtered suspended particles



3 cylinder diesel engine, water-cooled 21 HP



Drag brush for the maintenance process (2.400 mm)

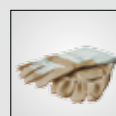
Recommended accessories for CareMax CM2



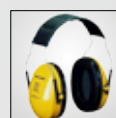
FloorTest FT50
Page 87



Leaves blower
Page 86



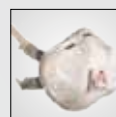
Gloves
Page 89



Hearing protector
Page 89



Safety glasses
Page 89



Dust mask
Page 89

Chassis	Rear mount accessory: laser-cut steel frame construction, plastic-coated;
Drive	3 cylinder diesel engine, water-cooled / 15.4 kW (21 HP)
Driving gear	hydrostatic, driving speed up to 15 km/h
Filter box	permanent filter with continuous dedusting
Rotating brush	1.000 mm
Vibrating sieve	variable adjustable from 4 - 10 mm
Maintenance brush	2.400 mm
Weight	670 kg
Dimensions	L 2.800 x W 1.250 x H 1.300 mm

Subject to technical alterations

TurfBoy TB2

Ride-on Machine For The Cleaning And Maintenance Of Artificial Turf With Sand and/or rubber granulates Infilling

The TurfBoy TB2 is driven by a 16 HP air-cooled petrol engine. Due to its very compact design the machine is ideal for the work on sand infilled tennis courts or sand/rubber infilled pitches such as futsal courts.



The rotary brush removes the very upper layer of infill material during its operation and is depth adjustable via two spindles. During this process an oscillating sieve separates the dirt from the infill material. The vibrating screen can be precisely adjusted, with variable settings from 4 to 10 mm, depending and in accordance with the condition of the infill material. The integrated suction turbine separates the dust from the infill material. The cleaned infill material will be returned to the system. The trailing brush row levels the infill material and, with a gentle action, lightly works it back into the artificial turf.

The rotary brush such as the trailing brush row can be dropped and lifted from the driver position. The trailing brush unit overlaps about 200 mm on the left side of the machine. This makes the cleaning of edges and corners possible. Due to the detachable trailing brush row, the TurfBoy TB2 can pass even doors of 1 meter width.



16 HP 2-cylinder petrol engine



Left-side overlapped drag brush row



Hand wheel for dedusting of the permanent filter



Adjustable sieve from 4 - 10 mm

Recommended accessories for TurfBoy TB2



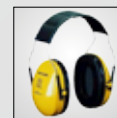
FloorTest FT50
Page 87



Leaves blower
Page 86



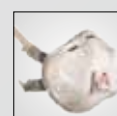
Gloves
Page 89



Hearing protector
Page 89



Safety glasses
Page 89



Dust mask
Page 89

Chassis	Laser-cut steel frame construction, plastic-coated
Drive	2-cylinder petrol engine, aircooled / 12 kW (16 HP)
Gearing	Hydrostatic, speed up to 12 km/h
Working Width	900 mm
Weight	380 kg
Dimensions	L 1.800 x W 900 x H 1.200 mm
Subject to technical alterations	

TurfKing TK1100/TK1500/TK1502

Rear-mount accessory for compact tractors for cleaning and deep cleaning of artificial turf with sand and/or rubber infilling

Conventional brush rows and/or drag mats are not suitable for thorough cleaning of floor coverings/deep cleaning and loosening of sand-filled and/or rubber-filled artificial turf. However, the new TurfKing TK1502 brush and vacuum system guarantees clean sports surfaces and optimum playing conditions.

The 3-point rear-mount type accessory for compact tractors goes with any type of tractors with a power of at least 20 to 25 HP and combines all important basic functions in one machine: TurfKing decompacts the surface, separates the infilling material from the dirt and returns it to the system thoroughly cleaned and in metered quantities. The vehicle is built to a compact design, simple to connect and, thanks to its 4 wheels, can also be manoeuvred easily by hand.

With the TurfKing, the required working depth can be precisely set via adjusting spindles – for all work operations, so that each individual function can be separately adjusted and carried out to suit the corresponding turf conditions. First of all, a row of steel springs gently loosens up the infilling material.

The trailing, rotating brush-roller straightens up the turf fibres and, in the process, gathers up all types of dirt particles. By means of a shaker sieve, the infilling material is separated from the impurities. Different sieve types, which can be swapped in a flash, make it possible to match exactly the requirements of the relevant infilling material. With the subsequent vacuum cleaning, suspended matter, abraded material and dirt particles of all kinds are removed. The polyester filter cartridges that are used are designed for long-lasting use and can be cleaned off electrically in a very simple way. A trailing brush row levels the infilling material and, in a gentle action, lightly works it back into the artificial turf.



Permanent filter with continuous dedusting of filtered suspended particles



TurfKing TK1502



TurfKing TK1500

Recommended accessories for TK1100/TK1500/TK1502



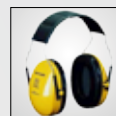
FloorTest FT50
Page 87



Leaves blower
Page 86



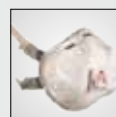
Gloves
Page 89



Hearing protector
Page 89



Safety glasses
Page 89



Dust mask
Page 89

Chassis	Laser-cut steel frame construction, plastic-coated; plastic cover (TK1500)
Working width	TK1100: 1.100 mm TK1500/TK1502: 1.500 mm
Drive	P.T.O. drive 540 rpm
Weight	TK1100: 225 kg TK1500: 300 kg TK1502: 270 kg
Dimensions	TK1100: L 900 x W 1.195 x H 830 mm TK1500: L 1.195 x W 1.655 x H 765 mm TK1502: L 900 x W 1.670 x H 830 mm

Subject to technical alteration

TurfCare TCA1400

For the cleaning and maintenance of sand and rubber filled artificial turf surfaces

The ground driven TurfCare TCA1400 from SMG cleans and maintains the surface of sand and rubber filled synthetic turf pitches. The wheel drive makes the equipment independent from any hydraulic or power shaft drives. Therefore the TurfCare can be pulled by various vehicles such as small compact tractors or quads.



The rotary brush straightens up the turf fibres and in the same process, gathers up all kind of dirt particles. The working depth can be precisely set and locked via two adjusting spindles. The two screens act as dirt trays. The vibrating screen can be precisely adjusted with variable settings from 4 - 10 mm depending on the degree of pollution and the grid size of the infilling material.

For the pass of narrow doorways the two transport rollers can be fold out and the tow bar can be raised up. A trailing brush row levels the infilling material and with a gentle action, lightly works it back into the artificial turf.



Drag brush row and draw bar can be fold up



Adjusting spindles for working depth and tow bar



Vibrating screen continuously adjustable from 4 - 10 mm



Fold-out transport rollers for transverse drive



Tines for the gentle loosening of the infill material

Recommended accessories for TCA 1400



FloorTest FT50
Page 87



Leaves blower
Page 86



Gloves
Page 89

Chassis	Laser-cut steel frame construction, plastic-coated
Working Width	1.400 mm
Weight	170 kg
Dimensions	L 1.800 x W 1.800 x H 550 mm

Subject to technical alterations

TurfSoft TS2/TS3

For the cleaning of small artificial turf surfaces with sand and sand/rubber filling

The competent conducted cleaning and maintenance is not only extremely important for the preservation of the playing characteristics and the guaranty of a long durability of the artificial turf pitches. Also the risk of players to be injured can be minimized by constant good athletic conditions of the surfaces.

The TurfSoft TS2 is a solution as simple as effective for the joy in the game and maintaining the value of small areas with infilled surfaces (sand and sand/rubber). Using this machine you can eliminate suspended particles, abrasion and dirt particles from the top surfaces. The manoeuvrable TurfSoft is ideal for areas with little space to move, where stairs, steps and narrow doorways complicate the access to the artificial turf pitches.

The TurfSoft is equipped with a petrol engine which controls three functions at the same time: the vibrating function of the sieve, the drive of the turbine and the rotation of the cleaning brush. With light pressure on the steering arm the brush steps into the turf and through the emerging feed it causes an easy and energy-saving operation.

The rotating brush absorbs the top layer of the infill material. Afterwards a sieve separates coarse and fine dirt. The suction turbine absorbs the coarse dirt directly into a permanent filter. The cleaned infill material is then spread out dosed by means of a vibrating sieve. The integrated filter can be simply cleaned by turning the handwheel.

For operation the front wheels of the TurfSoft are to lock but the fixing can be loosened for transport through narrow doorways. Since the TurfSoft is foldable and equipped with hand grips, it is easy to transport and can be stored space-saving.





TurfSoft TS3

For the cleaning of infilled artificial turf pitches along boards, fences or corner blocks SMG has developed the alternative TurfSoft TS3. Equipped with a hinged side broom the TurfSoft TS3 eliminates the dirt even in areas which are difficult to access. If the side broom is not used, it can be easily folded.



TurfSoft TS2/TS3



1-cylinder petrol engine for brush and turbine



Extractable filter sieve different sieve sizes available



Hand wheel to clean the permanent filter



Foldable steering arm for easy transport and storing in a small place

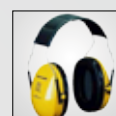
Recommended accessories for TurfSoft TS2/TS3



FloorTest FT50
Page 87



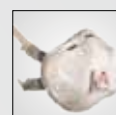
Gloves
Page 89



Hearing protector
Page 89



Safety glasses
Page 89



Dust mask
Page 89



Easy moving through narrow doorways

Chassis	Laser-cut steelframe construction, plastic-coated
Drive	1-cylinder petrol engine / 3.2 kW (4 HP)
Filter box	Permanent filter c. 5 m ²
Working width	800 mm
Weight	c. 85 kg
Dimensions	L 980 x W 750 x H 570 mm

Subject to technical alterations

Decompaction brush DC1600

The 3-point hitch rear-mount accessory with variable tow coupling fits all compact tractors commercially available in the market. It is designed to loosen mixed infilled artificial turf surfaces and to straighten the turf fibres. The infilling material is levelled with the trailing brush row. The working width is 1.600 mm; the working depth can be precisely adjusted via two adjusting spindles.



Chassis	Laser-cut steel frame construction, plastic-coated
Functions	6 rows of spring-steel tines, 100 mm long, 3 mm thick (fold up slightly from the surface when reversing) Double row, trailing drag-brush arranged in a V-form
Weight	130 kg
Dimensions	L 1.267 x W 1.677 x H 425 mm

Subject to technical alterations

Drag-brush SB1



The 3-point hitch rear-mount accessory with variable tow coupling is suitable for all types of compact tractors. Four specially arranged trailing drag brushes serve to level the surface of infilled artificial turf.



Chassis	Laser-cut steel frame construction, plastic-coated
Working width	c. 1.600 mm
Weight	62 kg
Dimensions	L 963 x W 1.690 x H 496 mm
Optional	drawbar in case 3-point-hitch is not available
Subject to technical alterations	

CarpetWonder CW95

For cleaning and maintaining carpet spread with granules in indoor tennis courts

CarpetWonder is a multi-functional machine for cleaning, picking up granulate from around the playing area, ball abrasion and other dirt particles, such as small stones, and for returning the exact quantity of granulate back to the carpet. This is all done by this special machine in one process. There is no better way of preserving the value and functional efficiency of your rubber granulate top dressed carpet.

With its effective brush roller and an enormous working width, despite its compactness, the CarpetWonder is very easy to move and turn and therefore, far superior to other cleaning machines. This is the only machine that is capable of picking up granulate and dirt together, separating them with a vibrating screen that can be set to operate at different speeds, and spreading the cleaned granulate back onto the carpet in variable and exactly dosed quantities.

Dust, ball abrasion and all other loose dirt particles lying around are picked up by the quietly operating suction turbine and compacted in a permanent filter. The tennis team on the neighbour court can concentrate on their match without being disturbed, while the CarpetWonder does its work of preserving the quality and safety of the surface of the court next to them with a minimum of noise.

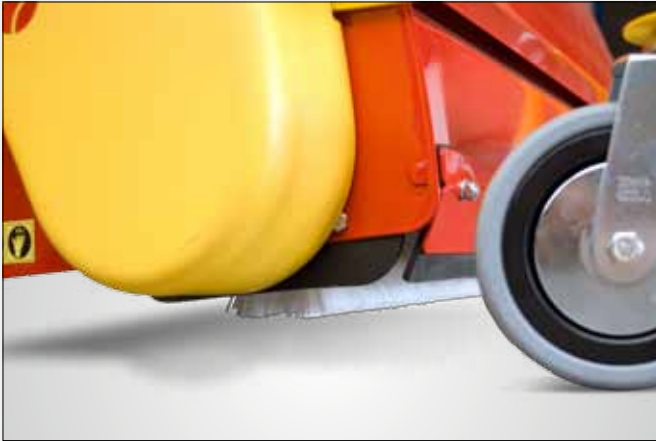
The cleaning efficiently protects and puts the carpet fibres upright while the desired quantity of granulate is evenly spread over the whole playing area at the same time as ball abrasion and other dirt particles are almost noiselessly removed, without creating dust.

CarpetWonder! First-class tennis court surfaces for game, set and match!





CarpetWonder CW95



The brush roller sweeps up dirt efficiently



Working width of brush: 900 mm



The cleaned granulate is returned to the carpet by the vibrating screen



Hand wheel to clean the permanent filter

Recommended accessories for CarpetWonder CW95



Gloves
Page 89



Safety glasses
Page 89



The quantity of granules strewn can be accurately controlled by the adjustable speed of the vibrating screen

Chassis	Laser-cut steel frame construction, plastic-coated
Drive	1.5 kW (2 HP) AC-current engine with safety switch
Brush drive	V-belt operated brush drive
Suction blower	V-belt operated suction blower
Running gear	Front: Steering rollers/ back: air-filled tires
Performance	about 600 m ² /h
Filter	Permanent filter c. 10 m ²
Weight	120 kg
Dimensions	L 1.180 x W 900 x H 900 mm

Subject to technical alterations

RenoMatic RM1400

Rear mount accessory for the removal of sand and/or rubber granulate in artificial turf

The RenoMatic RM1400 is able to remove infill material, sand and/or rubber, to an exact predetermined depth and quantity from artificial turf pitches. The powerful attachment with a working width of 1400 mm is connected to a tractor (minimum 34 HP) via a 3-point hydraulic attachment. The auger is driven by the hydraulic feed of the tractor while the two rotating tine shafts as well as the brush are driven by the provided cardan shaft of the tractor via PTO.

The infill material will be loosened and removed gently by both rotating tine shafts. A subsequent rotary brush collects the removed infill material. The speed adjustable auger transports the removed infilling material into either a BigBag or hopper.

Due to the precisely adjustable working depth of the tine shafts and rotary brush excellent results will be achieved in terms of removed quantity of infill material. The closed speed adjustable auger system enables a precise transport of the material into a waiting vehicle or directly into a BigBag. This entire process is extremely gentle on the fibre/turf system.

The chassis of the RenoMatic RM1400 can be easily removed for control, service and adjusting jobs.



Requirements for the use of RenoMatic RM1400

For the use a tractor with minimum 25 kW (34 HP) and a 3-point hydraulic power lift is needed.

Drive mechanism should preferably be carried out by a continuous hydrostatic drive mechanism or precision gear.

P.T.O. must perform 560 U/min.

Hydraulic connection needs a feeding power of approx. 30 - 40 liter per minute with approx. 100 bar.



RenoMatic RM1400



Rotary brush, equipped with tines for the gentle removal of the infilling material



Working depth of the tine shafts precisely multi adjustable



Rotary brush for the removal of the infilling material, adjustable working depth

Recommended accessories for RenoMatic RM1400



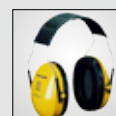
Auger for the transport of the infilling material, speed adjustable.



FloorTest FT50
Page 87



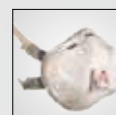
Gloves
Page 89



Hearing protector
Page 89



Safety glasses
Page 89



Dust mask
Page 89

Chassis	Laser-cut steel frame construction, plastic-coated
Drive	P.T.O. and hydraulic system
Working width	1.400 mm
Removal quantity per pass	5 kg/m ²
Working speed	5 m/min
Area Performance	400 m ² /h
Weight	520 kg
Dimensions	L 2.833 x W 1.411 x H 2.004 mm

Subject to technical alterations

TurfPickup TP600

Handy decompacting device for the loosening of infilled artificial turf

Hardened artificial turf pitches with sand and/or rubber granulate infill can be loosened by the TurfPickup TP600. The maneuverable TP600 is ideal especially for small facilities e.g. tennis courts or repair areas in larger facilities.

A rotating tine shaft loosens hardenings carefully and removes the infill material from the artificial turf. The working depth can be adjusted via spindles. The 1-cylinder petrol engine provides sufficient power to work very effectively with a width of 600 mm. A weight of 75 kg and a fold-away handle make it easy and extremely handy to transport the TP600.





TurfPickup TP600



1-cylinder petrol engine for the drive of the tine shaft



Working depth adjustable via spindles



Rotating shaft with flexible tines

**Recommended
accessories for
TurfPickup TP600**

Chassis	Laser-cut steel frame construction, plastic-coated
Drive	1-cylinder petrol engine 2.5 kW (3.4 HP)
Working width	600 mm
Working speed	10 m/min
Performance	360 m ² /h
Weight	75 kg
Dimension	L 800 x W 570 x H 960 mm

Subject to technical alterations



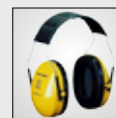
FloorTest FT50

Page 87



Gloves

Page 89



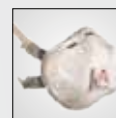
Hearing protector

Page 89



Safety glasses

Page 89



Dust mask

Page 89

Tools



TurfGrip TG30, TG60 Gripping tongs for a fast and easy paving of artificial turf
 T630 Art.-No. 8900048
 T660 Art.-No. 8900049



TurfFix
 TurfClutch for fixing the joints of artificial turf strips while glueing
 Art.-No. 8900054



LineCutter
 Tool for cutting of variable width of straight lines and circular lines in artificial turf
 Art.-No. 6400081



Circle Cutter
 Tool for circular cutting in artificial turf
 Art.-No. 6400095



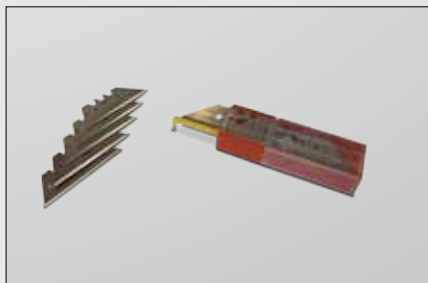
TurfCutter Cutting device for speedy and precise cutting-out of worn, sand infilled artificial turf areas Art.-No. 8900033



ElektroCutter to trim artificial turf along curb stones
 Art.-Nr. 6400129

**Cutter**

Art.-Nr. 3202346

**Knife blades**

Art.-Nr. 3202355

**EdgeTrimmer**

Art.-Nr. 8900059

**GrassCutter**

For proper cutting along-side of existing track seams of artificial turf

Art.-No. 8900058

**SeamFix**

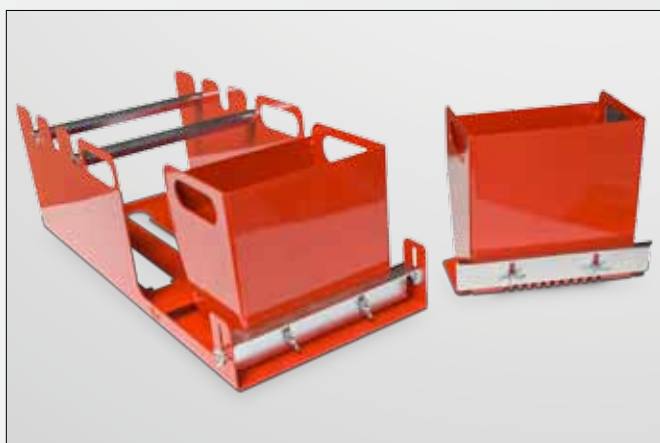
Pressure tool for the solidified connection of the seams of artificial turf and glue coated seam tape

Art.-No. 8900056

**GF150**

Glue applicator for glue coating of seam tape for artificial turf. Mobile version

Art.-Nr. 8900030

**GF300**

Glue applicator for glue coating of seam tape for artificial turf. Stationary version.

Art.-Nr. 6400098

**GF400 Vario**

Glue applicator for glue coating of seam tape for artificial turf. Mobile version.

Art.-Nr. 6400102

PlanoMatic P435

SMG is experienced in the development of paving machines for synthetic surfaces in the sports business for over 35 years. Due to this know-how SMG can also offer powerful paving machines for the professional installation of synthetic cement-bound floor screeds. A machine with a working width of 2.4 meters as well as a fully automatic and laser-controlled paving machine with a working width of 3.5 meters are available.

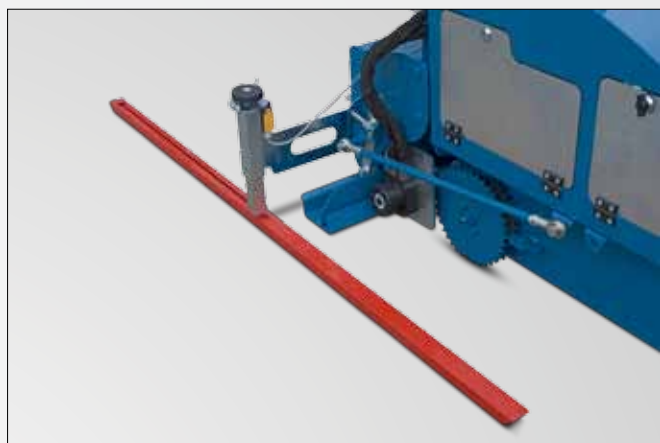
Paver for the installation of bonded screeds

The PlanoMatic P435 has been developed for the professional and efficiency-oriented installation of bonded screeds. Providing a working width of 3500 mm the P435 is capable to pave up to 1000 square meter per hour and thus enables feed speeds of 1.0 to 5.0 meter per minute. Star-shaped drive wheels guarantee best traction. A connected upstream material manifold makes the manual moving of the material unnecessary. Subsequently the paddle shaft in front of the screed ensures an equal compaction.

The screed can be adjusted in its slope and hence adjusted to all conditions - always assuring an optimal surface finish. For a planar installation either a laser control or a tactile unit can be mounted. An optional petrol generator provides the necessary power for the P435 and makes the machine independent from external power sources. The PlanoMatic P435 is controlled conveniently by the control panel.



Optional laser control for exact installation thickness



Optional tactile unit for scanning of the subbase

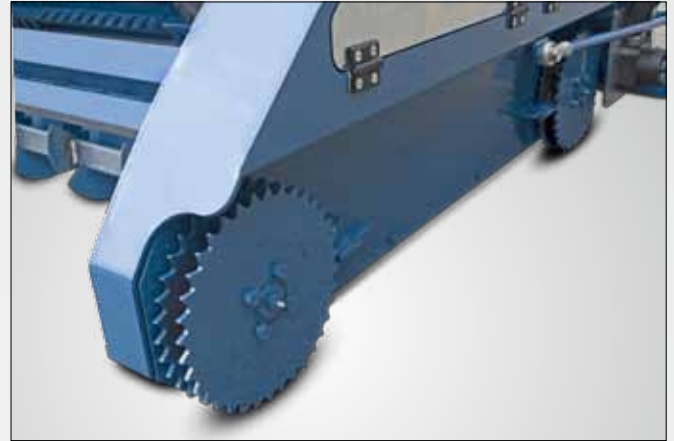


Optional petrol generator

PlanoMatic P435



Pivotal control panel



Star-shaped drive wheels with material deflector



Material distribution at the front of the machine



Paddle shaft for equal compaction

Recommended accessories for PlanoMatic P435



Hydraulically liftable transport chassis

Chassis	Laser-cut steel frame construction, plastic-coated
Drive	electric motor infinitely variable by frequency inverter, feed rate c. 1.0 m/min to 5.0 m/min
Driving gear	4 star wheels
Screed bar drive	Gear motor
Screed bar	Special profile, installation thickness from 15 - 50 mm, grade setting 0 -10°
Power	6 kW (8 HP) / 400 V AC / 50 - 60 Hz
Installation width	3.500 mm
Area Performance	150 - 200 m ² /h
Weight	1.200 kg
Dimensions	L 3.600 x W 1.600 x H 1.100 mm

Subject to technical alterations



TestSet
Page 87



Measuring tape
Page 88



Gloves
Page 89



Generator E110
Page 86



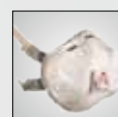
Extension cord
Page 87



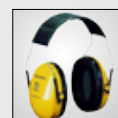
FloorTest FT50
Page 87



Aluminium shovel
Page 87



Dust mask
Page 89



Hearing protector
Page 89



Hard hat
Page 89

PlanoMatic P102

Machine for the installation of high quality industrial flooring

PlanoMatic P102 is designed to fulfill all the requirements of industrial floor installation.

High area coverage and extreme ease of handling greatly reduces manpower and working time requirements. With regulatable speeds from c. 0.8 m/min to 1.6 m/min the PlanoMatic P102 rapidly and evenly compresses every kind of industrial flooring mortar in one pass.

A hand wheel enables the thickness of the covering to be regulated to exactly suit the conditions on the job site. It can also be used with templates. Previously laid and compressed seamless floors with a level, even surface simplify the smoothing of the top covering. It is also possible to spread additional hard-aggregate floor screed. Levelling with laser guidance means that all kinds of top coverings can be laid absolutely level.

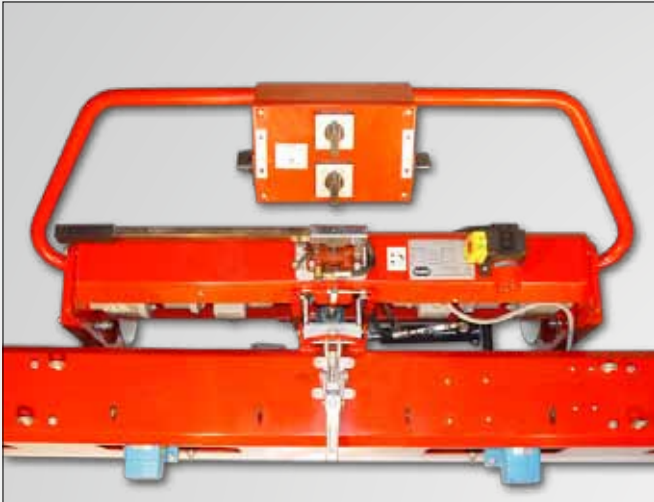




Quick coupling enables the drive and levelling units to be assembled to make a machine ready for immediate use and then taken apart again for transporting in a matter of seconds.

The levelling unit with laser guidance can be mounted on either side. The transport running gear can be hydraulically extended by a manually-operated pump.

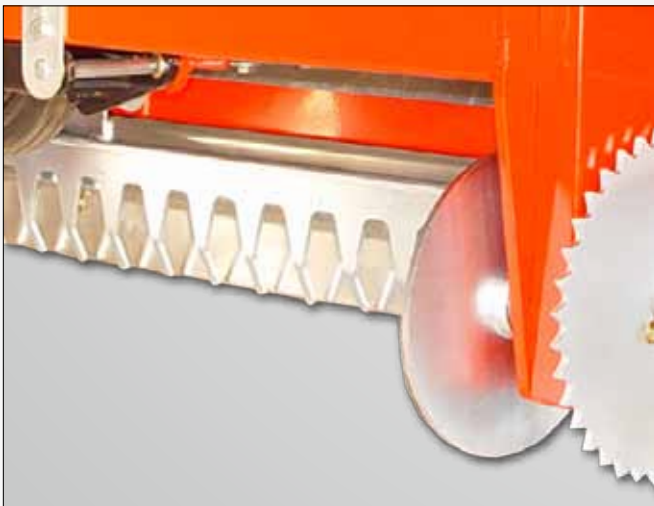
PlanoMatic P102



Quick coupler for main drive



Levelling bar



Spreading rake and drive wheel

Recommended accessories for PlanoMatic P102



TestSet
Page 87



Measuring tape
Page 88



Gloves
Page 89



Generator E110
Page 86



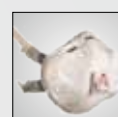
Extension cord
Page 87



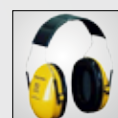
FloorTest FT50
Page 87



Aluminium shovel
Page 87



Dust mask
Page 89



Hearing protector
Page 89



Hard hat
Page 89

Chassis	Laser-cut steel frame construction, plastic-coated, most attached parts galvanized
Drive	Electro-mechanical with 2-stage gear motor; travel c. 0.8 m/min and 1.6 m/min forwards and backwards
Power	2 kW (2.7 HP) / 3 ph. / 380 V / 50 - 60 Hz / 16 A
Screed bar	Vibrator board (special profile); spreading rake
Lifting the driving gear	Hand-operated hydraulic pump
Installation width	c. 2.400 mm
Area Performance	c. 100 m ² /h min. up to 240 m ² /h max.
Weight	c. 180 kg
Dimensions	L 700 x W 2.500 x H 800 mm

Subject to technical alterations

Markets



Forwarding company with daily departures

Warehouse/Logistics

Ultra-modern and computer-controlled storage techniques ensure fast access times during the dispatch of machinery and spare parts. All spare parts of the current product range and also common wear parts of SMG machines until well into the 70s are stored on an area of 2.500 m².

The standard range of SMG machines is available from stock. Market-leading parcel services provide for a delivery within 24 hours. Our usual shipping company delivers SMG products as fast as possible and safe via air, sea or ground transport. In urgent cases we arrange deliveries via extra tour on the same day.



Spare parts storage



Machine warehouse



Picking location

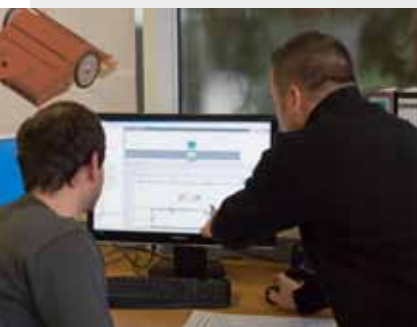


Small parts storage lift

Machines

Construction/Development

A team of engineers and technicians are continuously developing market-oriented innovations. Often in close co-operation with customers and partners from all over the world. High job site frequency provides a global market transparency and is therefore the foundation for a steady progress and the outstanding product range. Exciting ideas arise by the daily contact with end users on site. Using the latest 3D design programs our new innovations pass the way from the simulation and construction



to the parts catalogue with parts number descriptions. Clear 3D drawings facilitate the ordering of replacement parts for our customers. The entire SMG product range is CE compliant and subject to constant EMC control processes. SMG products meet international safety regulations and standards - for a high degree of operational safety during use on site. Besides the standard products for the installation and maintenance of synthetic sports surfaces, SMG regularly develops special constructions based on the line-of-business upon customer's request. Laser-driven paving machines for the installation of cement-bound floor screeds are part of SMG's enlarged product range for many years as well as the unique installation machines for natural turf produced under license.

Metal construction



Prototyping

For years mechanical engineers in the prototyping have been developing technical innovations in cooperation with the engineering team. Numerous practical and field tests blaze the long trail to the new product. The often high capital expenditure is rewarded by products which are ready for serial production and marketable and by an excellent reputation in the industry.

Laboratory/test

In our laboratory or test bench the maintenance equipment will be tested for its function. The knowledge gained out of it provides the basis for continuous development and improvement of our products. Furthermore the test bench offers the possibility of having the cleaning brushes and artificial turf undergoing a long-term test. Thus SMG guarantees that the brushes used in its care and maintenance machines treat the fibres of the artificial turf gently.



Test plant



Application Technology

Experienced SMG technicians at home and abroad verify and afterwards check a new development under various job site requirements and during completely different climate conditions. In addition standardized SMG machines are subject to continuous innovation processes. One of our aim for the customer is the prompt improvement of our products in accordance with the current state of technology - for more efficient working on the job sites. In doing so, we offer our installation machines for synthetic material basically as combinations - adapted to the corresponding surface of your project portfolio. Because only machines coordinated in its performance ensure a logistically smooth installation process and hence represent a powerful equipment package, e.g. MixMatic M6004 and PlanoMatic P928.



Sheet metal forming



Assembling line

Production

A laser cutting and CNC machining centre for bending processes and generously equipped workstations for welding, turning and drilling in our metal construction enable a speedy production flow for the construction of machines as well as the manufacturing of spare parts. The flexibility of the production and the complete technical documentation of the last 35 years guarantee a supply of spare parts even for machines made at the time of establishing the company. All parts of SMG's product range are either powder-coated, zinc-plated or hot-galvanized, made out of stainless steel or synthetics for maximum durability. High-quality components of well-known and certified suppliers are made up to complete machines by professionals in our assembling department according to the state of technology. Thereby small series of special machines are subject to regular quality controls as well as large-scale production of standard machines. SMG technicians are working at flexible and ergonomic assembling stations equipped with first-class tools and devices for the highest quality and performance.



Quality assurance

People

Sales/Distribution

Friendly, multilingual and qualified staff will advise you at any time for your personal job. From the playground manufacturer to the running track installer, from the private tennis court to the stadium with different synthetic sports surfaces - we are pleased to advise you over the phone, by e-mail, fax or even on site. Due to the global network of SMG representatives we are close to you. Our trained staff in the headquarter in Germany supports weekdays from 6 am to 6 pm. The sales department for Europe/Overseas and our service technicians stand at your disposal 24 hours by telephone. Our machines are available for your visit in our showroom which enables us to offer you test runs, demonstrations and machine instructions at any time after arrangement.

SMG products can be seen regularly on domestic and international trade shows.



Refurbishment

On-site service

Our technicians based in the German headquarter and in numerous locations worldwide offer their expertise. For machine instructions we send our trained staff directly to your job site, even for several days. Through the close collaboration with manufacturers of synthetic granules, artificial turf or polyurethanes and long cooperations with leading installation companies we are always able to establish competent contacts. Be it for the project consulting, material choice, implementation of installations and/or for the supervision of your job site - our contacts are your advantage. Should you require help with our motors, compressors or electrical components we are happy to convey you to a service point in your area - of course even after warranty expiration.

Service station



In-house service

In case of emergencies a special equipped repair station makes repair works possible within a few hours. Defective SMG machines can thus be repaired immediately also during the high season.



FSB Exhibition Germany



Fair overseas

Family business

Customers favour us - not only because we always offer the best possible technical solution. It is a particular concern of our family business that the human component in the business is not being missed out. Therefore we are proud of the commitment and dedication of our competent staff, proud of our customers' loyalty and the reliability of our sales and service staff. Whether in developing and manufacturing a product, at the time of delivery and instruction or providing of consulting/service features: You can always count on SMG.

JAPAN SALES COORDINATOR

Buorren 7/8
8584VB Hemelum
Tel.: +31-514-58-1568
Fax: +31-514-58-1324
surface-japan@planet.nl

JAPAN

Technical Service & Support Center
Yamahide Co., Ltd.
863 Higashikananai
Noda-City
270-0236 Chiba-Prefecture
Tel.: +81-4-7120-9550
Fax.: +81-4-7120-9550
yamahide@diary.ocn.ne.jp

JAPAN

Technical Service & Support Center
Nakamura Co., Ltd.
1370 Nissato-cho
Souka-City
340-003 Saitama-Pref, Japan
Tel.: +81-(0)489-25-0491
Fax.: +81-(0)489-28-3183

REPUBLIC OF KOREA

FICO International
Room 401, Ace business town
1234 Baegyang-Ro, Buk-Ku
616-802 Busan
Tel: +82-51-341 2441
Fax: +82-51-341 2442
Mobile: +82-11-851 2445
E-Mail: fico@ifico.co.kr

PEOPLES REPUBLIC OF CHINA

SMG SPORTPLATZMASCHINENBAU GMBH
Wan Tong Center B-4A-47,
Chao Yang Road Jia No. 6,
Chao Yang District,
100022 Beijing
Tel: +86-10-59073251
Fax: +86-10-58766433
Mobile: +86-15801247303
jian.bai@smg-gmbh.cn

AUSTRALIA

JSB Equipment Pty Ltd
28 Tova Drive
Carrum Downs, Victoria 3201
Tel.: +61-3-977-084 24
Fax: +61-3-977-084 94
Mobile: +61-407-600-100
info@jsbequipment.com
www.jsbequipment.com

RUSSIA

Bamard
Radio str., 24, of. 601
105005 Moskau RUSSIA
Tel.: +7-495-514-09-09
bamard-sport@bamard.ru
www.bamard.ru

TURKEY

Safran Spor Zeminleri Insaat TIC. LTD. STI.
Kaysdagi Yolu Caddesi Cetinalp APT.
NO:45/1 Icerenkoy
34752 Istanbul
TEL: +90 216 577 08 75-76-78
FAX: +90 216 577 08 79
safran@safran.com.tr
info@safran.com.tr
www.safran.com.tr

ROMANIA

Tel: +40 21 66 79 20 6
Fax: +40 31 81 73 98 9
Mobil: +40 73 10 20 82 5
office@smg-gmbh.ro
www.smg-gmbh.ro

HUNGARY

Global Sport Kft.
Tömös - u. 17
4030 Debrecen
Tel.: +36-52-536-241
Fax: +36-52-470-431
globalsport@globalsport.hu
www.globalsport.hu

POLAND

Tel/Fax: +48 (0) 22 885 0019
Mobile: +48 668 827 784
biuro@smg-gmbh.pl
www.smg-gmbh.pl

SWITZERLAND

LV-Maschinencenter
Romanshorne Strasse 51
9303 Wittenbach SG
Tel: +41 (0)71-292 3052
Fax: +41 (0)71-292 3058
info@lvmc.ch
http://www.lvmc.ch

AUSTRIA

Ortner und Stanger
GmbH & Co KG
Fürstenweg 66 6
020 Innsbruck
Tel: +43-512 2201 59
Fax: +43-512 2201 91
Mobile: +43-664-201-37 70
buchhaltung@ortnerundstanger.at
www.ortnerundstanger.at

FRANCE

Aqua Clean
36, Rue de Salbris
18330 Nancay
Tel.: +33-2-48 51 80 03
Fax: +33-2-48 51 18 94
philip@aquaclean-france.com
www.aquaclean-france.com

SPAIN, PORTUGAL & LATIN AMERICA

SMG Ibérica / Sport Care, S.L.
Calle Marathón 6 - Portal A - Of 11
28037 Madrid
SPAIN
Tel.: +34 913-121 000
Fax: +34 913-049 851
info@smg-gmbh.es
info@sport-care.com
www.sport-care.com

NETHERLANDS

Rooden b.v.
Weerterveld 19
6231 NC Meerssen
Tel.: +31 (0)43-364-4238
Fax.: +31 (0)43-364-5017
info@roodenbv.nl
www.roodenbv.nl

SWEDEN

Malte Manson AB
Borgmästaregatan 21
59623 Skänninge
Tel: +46-142-299 100
Fax: +46-142-413 50
hans.ekman@maltemanson.com
http://www.maltemanson.com

GREAT-BRITAIN

Technical Surfaces Ltd.
Standards House
Meridian East
Meridian Business Park
Leicester, LE19 1WZ
Tel.: +44-8702-400 700
Fax.: +44-8702-400 701
admin@technicalsurfaces.co.uk
http://www.technicalsurfaces.co.uk

UNITED STATES OF AMERICA

R.K. Consulting
63, Chaminade Drive
Saint Louis, MO 63141
Tel: +1-314-692 8193
Fax: +1-314-991 5360
Mobile: +1-314-406 3593
RKunkel146@aol.com
www.sport-install.com

UNITED STATES OF AMERICA

SMG Equipment LLC
2002 West Valley Highway N., Suite 300
USA - Auburn, Washington 98001
Tel.: +1-253-350-8803
Fax.: +1-253-479-3000
Mobile: +1-425-301-6605
smgequipment@gmail.com
www.smgequipment.com

CANADA

SMG SALES AND SERVICE
8441 - 160 th Street
CA-Surrey BC
Mobile: +1-778-995 6130
d.joehl@gmail.com



passion for sports grounds