

# MixMatic M5300

## Automatic mixer for 2-component liquid self-levelling polyurethane coatings

Nowadays, high-quality liquid polymers for synthetic sports surfaces as synthetic surfaces or sandwich systems are mixed at the best by the MixMatic M5300. Especially certified (IAAF) high-performance sport facilities require constantly exact and homogenous material mixtures during the installation process.

The M5300 consists of each two suction pump as well as dosage pumps. These are driven by the three-phase current gear motors. During continuous operation frequency convertors enable mixing ratios of up to 10:1. The hoses are either connected directly to the material barrels or to the IBC-Container where the different liquid components will be aspirated and delivered to the pipe by means of the dosage pumps.

A special mixing tool mixes component A and B to a homogenous self-levelling polyurethane coating. Flow rate sensors control the suction process. The calibration of the machine can be carried out through the central control panel. Afterwards the mixer is switched on and off manually by means of the manual control. An optional material container also permits adding granulate or granulate powder. The M5300 has an output of up to 80 liters per minute. Truck-fork slots and hooks are available on all sides and thus guarantee a safe loading and transport.





# MixMatic M5300



Suction and dosing pump for both components



Central control panel with timer and control lights

### Recommended accessories for MixMatic M5300



Frequency converter for ratios until 10:1

<b>Chassis</b>	Laser-cut steel frame construction, plastic-coated
<b>Mixer pipe</b>	Galvanized, connection for components on the side
<b>Drive Pumps/Mixer</b>	three-phase current gear motor infinitely variable via frequency convertor
<b>Power</b>	10 kW (13.6 HP) / 400 V / 50 - 60 Hz
<b>Performance</b>	80 liters/min
<b>Weight</b>	850 kg
<b>Dimensions</b>	L 1.400 x W 810 x H 1.500 mm

Subject to technical alterations



**Generator E285**  
Page 86



**Extension cord**  
Page 87



**Drum wheelbarrow**  
Page 87



**Drum support**  
Page 86



**Drum cock**  
Page 86



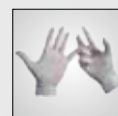
**Drum wrench**  
Page 87



**Scale**  
Page 88



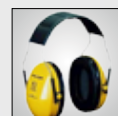
**Gloves**  
Page 89



**Disposable gloves**  
Page 89



**Cotton gloves**  
Page 89



**Hearing protector**  
Page 89



**Safety glasses**  
Page 89