

MixMatic M6004

Automatic continuous mixer for mixing materials used for synthetic sports surfaces

The powerful and compact M6004 is a highly effective and clean solution for the homogeneous mixing of rubber granulate, with single-component binder (polyurethane). A gravel unit or a second PU pump can be optionally coupled to the basic machine. In conjunction with a modular construction system of various screw feeders, pipes and feeding adapters it is possible to get a wide variety of individual mixtures with precisely measured ratios for many different kinds of surfaces, e.g. recycled granulate base mats, EPDM granulate surfaces, sandwich-systems, PUR-coatings, structural spraying coatings, elastic subbases and others. Switch and control elements for the mixer and the auxiliary appliances are on one common control panel.



**Option 1**

Gravel container with 1.000 liter capacity, with sensor control of the fill level and a vibrator driven by an electric motor for a continuous material flow.

Option 2

An electrical steered dosage pump for mixing of polyurethane coatings. Hose connections for adding the B component as well as the special mixing tube and tools are included in the delivery of the dosage pump.

The steering track-rod makes the handling of the MixMatic M6004 easy manoeuvrable on site. The chassis handbrake and the supports, which can be pulled out, hold the machine firmly in place when parked; all-round truck-fork slots enable a safe loading on a fork-lift truck.

The central electrical control for the mixer has interfaces for the connection of the auxiliary appliances. The PU, granulate and gravel outputs are infinitely adjustable. The output quantity of the individual component is relying on the rpm and digitally displayed.

The mixing unit, consisting of pipe, feed screw and motor works at a constant rpm. Metering and mixing times are controlled by a timer.

MixMatic M6004



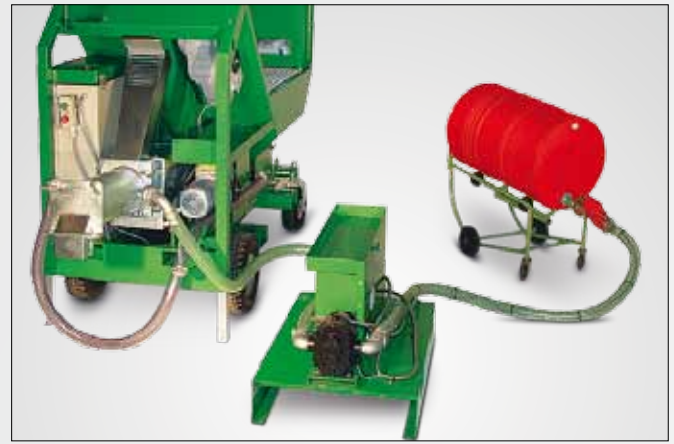
Suction and dosage pump



Example of a combination of basic mixer and gravel unit (Option 1)



Switch cabinet with central electrical control



Transportable dosage pump unit for the mixing of 2-component PU-coatings (Option 2)

Recommended accessories for MixMatic M6004

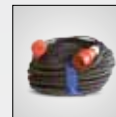
Chassis + mixing container	Laser-cut steel frame construction, plastic-coated;	
Tires	Rigid axle: air-filled tires, manual parking brake; Steering axle: air-filled tires, pull-out supporting legs Air-filled tires \varnothing 400 mm Solid rubber tires \varnothing 350 mm	
Mixer pipe	Galvanized, can be swivelled up and down hydraulically, binding agent connection on the side	
Drive pump and gear	3-phase current for granulate and grit drives; A.C. geared motor infinitely regulatable, electron. rpm indicator.	
Mixer drive	A.C. geared motor, constant rpm.	
Performance	Rubber/Binder	max. 150 kg/min
	Rubber/Gravel/Binder	max. 160 kg/min
	Binder/Polyol	max. 35 kg/min
	Binder/Polyol/Rubber	max. 35 kg/min
Power	Basic mixer:	12 kW / 400 V / 50 - 60 Hz / 26 A
	Grit unit:	1.85 kW / 400 V / 50 - 60 Hz / 4.25 A
	2nd dosing pump:	1.85 kW / 400 V / 50 - 60 Hz / 4.25 A
Weight	Basic mixer:	1.100 kg
	Gravel unit:	900 kg
	2nd dosing pump:	350 kg
Dimensions	Basic mixer:	L 2.250 x W 1.000 x H 1.800 mm
	Gravel unit:	L 2.250 x W 1.000 x H 1.800 mm
	2nd dosing pump:	L 1.100 x W 710 x H 700 mm

Subject to technical alterations



Generator E285

Page 86



Extension cord

Page 87



Drum wheelbarrow

Page 87



Drum support

Page 86



Drum cock

Page 86



Drum wrench

Page 87



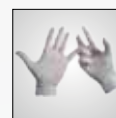
Scale

Page 88



Gloves

Page 89



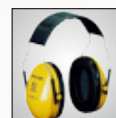
Disposable gloves

Page 89



Cotton gloves

Page 89



Hearing protector

Page 89



Safety glasses

Page 89